

Datasheet for ABIN2715354

BTN2A1 Protein (Transcript Variant 2) (Myc-DYKDDDDK Tag)



[Go to Product page](#)

1 Image

Overview

Quantity:	20 µg
Target:	BTN2A1
Protein Characteristics:	Transcript Variant 2
Origin:	Human
Source:	HEK-293 Cells
Protein Type:	Recombinant
Purification tag / Conjugate:	This BTN2A1 protein is labelled with Myc-DYKDDDDK Tag.
Application:	Antibody Production (AbP), Standard (STD)

Product Details

Characteristics:	<ul style="list-style-type: none">• Recombinant human BTN2A1 (transcript variant 2) protein expressed in HEK293 cells.• Produced with end-sequenced ORF clone
------------------	--

Purity:	> 80 % as determined by SDS-PAGE and Coomassie blue staining
---------	--

Target Details

Target:	BTN2A1
Alternative Name:	Btn2a1 (BTN2A1 Products)
Background:	This gene encodes a member of the immunoglobulin superfamily. The gene is located in a cluster of butyrophilin-like genes in the juxta-telomeric region of the major histocompatibility complex on chromosome 6. A pseudogene of this gene has been identified in this cluster. The encoded protein is an integral plasma membrane protein involved in lipid, fatty-acid, and sterol

Target Details

metabolism. Alterations in this gene may be associated with several disease states including metabolic syndrome. Multiple alternatively spliced transcript variants encoding different isoforms have been found for this gene.

Molecular Weight: 34.9 kDa

NCBI Accession: [NP_510961](#)

Pathways: [Activated T Cell Proliferation](#)

Application Details

Application Notes: Recombinant human proteins can be used for:
Native antigens for optimized antibody production
Positive controls in ELISA and other antibody assays

Comment: The tag is located at the C-terminal.

Restrictions: For Research Use only

Handling

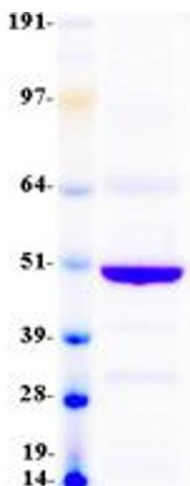
Concentration: 50 µg/mL

Buffer: 25 mM Tris.HCl, pH 7.3, 100 mM glycine, 10 % glycerol.

Storage: -80 °C

Storage Comment: Store at -80°C. Thaw on ice, aliquot to individual single-use tubes, and then re-freeze immediately. Only 2-3 freeze thaw cycles are recommended.

Images



Western Blotting

Image 1. Validation with Western Blot