

Datasheet for ABIN2715519

**C4orf14 Protein (Myc-DYKDDDDK Tag)**[Go to Product page](#)**1** Image

## Overview

|                               |   |
|-------------------------------|---|
| Quantity:                     | 20 µg   |
| Target:                       | C4orf14   |
| Origin:                       | Human   |
| Source:                       | HEK-293 Cells   |
| Protein Type:                 | Recombinant   |
| Purification tag / Conjugate: | This C4orf14 protein is labelled with Myc-DYKDDDDK Tag. |
| Application:                  | Antibody Production (AbP), Standard (STD)               |

## Product Details

|                  |  |
|------------------|--|
| Characteristics: | <ul style="list-style-type: none"><li>• Recombinant human C4orf14 protein expressed in HEK293 cells.</li><li>• Produced with end-sequenced ORF clone</li></ul> |
| Purity:          | > 80 % as determined by SDS-PAGE and Coomassie blue staining   |

## Target Details

|                   |   |
|-------------------|---|
| Target:           | C4orf14   |
| Alternative Name: | c4orf14 ( <a href="#">C4orf14 Products</a> )  |
| Background:       | The protein encoded by this gene is a nuclear-encoded GTPase that functions in the mitochondrion. Upon translation, this protein is imported into the nucleus and then into the nucleolus before being exported to the mitochondrion. The encoded protein is required for oxygen-dependent regulation of mitochondrial respiratory complexes and for mitochondrial protein synthesis. |

## Target Details

|                   |                           |
|-------------------|---------------------------|
| Molecular Weight: | 78.3 kDa                  |
| NCBI Accession:   | <a href="#">NP_115689</a> |

## Application Details

|                    |  |
|--------------------|--|
| Application Notes: | Recombinant human proteins can be used for:<br>Native antigens for optimized antibody production<br>Positive controls in ELISA and other antibody assays |
|--------------------|--|

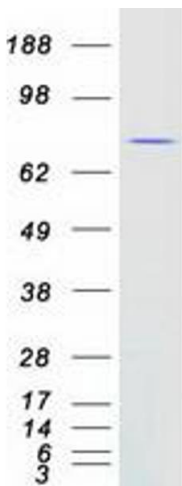
|          |                                       |
|----------|---------------------------------------|
| Comment: | The tag is located at the C-terminal. |
|----------|---------------------------------------|

|               |                       |
|---------------|-----------------------|
| Restrictions: | For Research Use only |
|---------------|-----------------------|

## Handling

|                  |   |
|------------------|---|
| Concentration:   | 50 µg/mL  |
| Buffer:          | 25 mM Tris.HCl, pH 7.3, 100 mM glycine, 10 % glycerol.  |
| Storage:         | -80 °C  |
| Storage Comment: | Store at -80°C. Thaw on ice, aliquot to individual single-use tubes, and then re-freeze immediately. Only 2-3 freeze thaw cycles are recommended. |

## Images



### Western Blotting

**Image 1.** Validation with Western Blot