

Datasheet for ABIN2715763

anti-Adenylosuccinate Lyase antibody

3 Images

[Go to Product page](#)

Overview

| | |
|--------------|--|
| Quantity: | 0.1 mL |
| Target: | Adenylosuccinate Lyase (ADSL) |
| Reactivity: | Human, Rat, Dog, Monkey |
| Host: | Mouse |
| Clonality: | Monoclonal |
| Conjugate: | This Adenylosuccinate Lyase antibody is un-conjugated |
| Application: | Western Blotting (WB), Immunohistochemistry (IHC), Flow Cytometry (FACS) |

Product Details

| | |
|---------------|---|
| Immunogen: | Full length human recombinant protein of human ADSL (NP_000017) produced in HEK293T cell. |
| Clone: | 2D10 |
| Isotype: | IgG1 |
| Purification: | Purified from mouse ascites fluids by affinity chromatography |

Target Details

| | |
|-------------------|--|
| Target: | Adenylosuccinate Lyase (ADSL) |
| Alternative Name: | ADSL (ADSL Products) |
| Molecular Weight: | 54.7 kDa |
| Gene ID: | 158 |

Target Details

| | |
|-----------------|---|
| NCBI Accession: | NM_000026 |
| HGNC: | 158 |
| Pathways: | Ribonucleoside Biosynthetic Process |

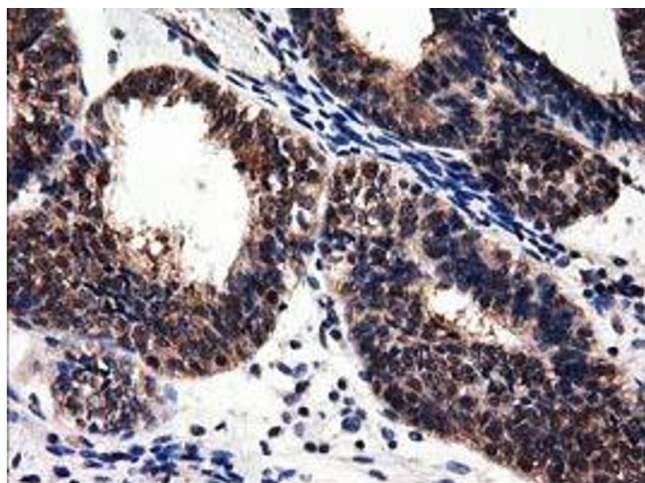
Application Details

| | |
|--------------------|---|
| Application Notes: | WB 1:500~2000, IHC 1:150, FLOW 1:100 |
| Comment: | The concentration of the product may vary between different lots. |
| Restrictions: | For Research Use only |

Handling

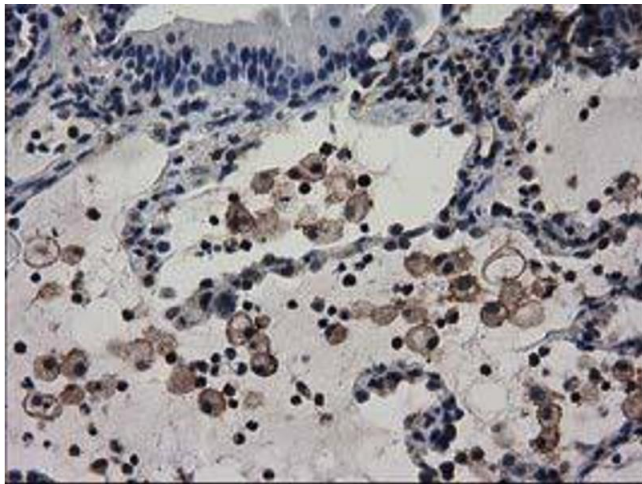
| | |
|--------------------|--|
| Format: | Liquid |
| Concentration: | 0.5-1.0 mg/mL |
| Buffer: | PBS (PH 7.3) containing 1 % BSA, 50 % glycerol and 0.02 % sodium azide. |
| Preservative: | Sodium azide |
| Precaution of Use: | This product contains sodium azide: a POISONOUS AND HAZARDOUS SUBSTANCE which should be handled by trained staff only. |

Images



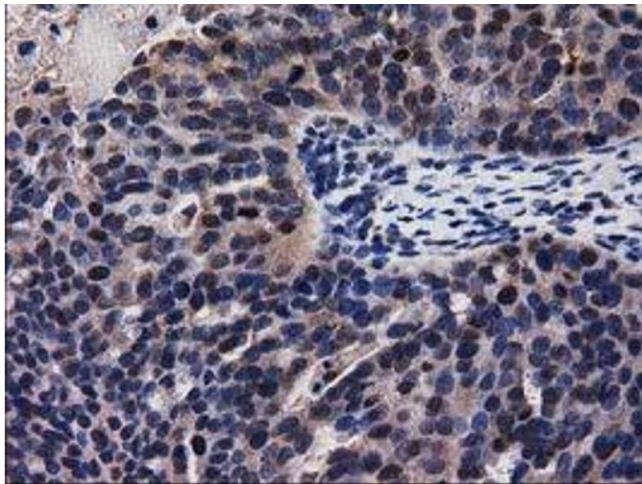
Immunohistochemistry

Image 1. Immunohistochemical staining of paraffin-embedded Human liver tissue using anti-ADSL mouse monoclonal antibody. (ABIN2452704)



Immunohistochemistry

Image 2. Immunohistochemical staining of paraffin-embedded Human Kidney tissue using anti-ADSL mouse monoclonal antibody. (ABIN2452704)



Immunohistochemistry

Image 3. Immunohistochemical staining of paraffin-embedded Carcinoma of Human kidney tissue using anti-ADSL mouse monoclonal antibody. (ABIN2452704)