

Datasheet for ABIN2716266

**anti-APMAP antibody****3** Images[Go to Product page](#)

## Overview

Quantity:	0.1 mL
Target:	APMAP
Reactivity:	Human, Mouse, Rat, Dog, Monkey
Host:	Mouse
Clonality:	Monoclonal
Conjugate:	This APMAP antibody is un-conjugated
Application:	Western Blotting (WB), Immunohistochemistry (IHC), Flow Cytometry (FACS)

## Product Details

Immunogen:	Full length human recombinant protein of human C20orf3(NP_065392) produced in HEK293T cell.
Clone:	4F6
Isotype:	IgG2b
Characteristics:	Homo sapiens chromosome 20 open reading frame 3 (C20orf3)
Purification:	Purified from mouse ascites fluids by affinity chromatography

## Target Details

Target:	APMAP
Alternative Name:	C20orf3 ( <a href="#">APMAP Products</a> )
Background:	CHMP1B belongs to the chromatin-modifying protein/charged multivesicular body protein

## Target Details

(CHMP) family. These proteins are components of ESCRT-III (endosomal sorting complex required for transport III), a complex involved in degradation of surface receptor proteins and formation of endocytic multivesicular bodies (MVBs). Some CHMPs have both nuclear and cytoplasmic/vesicular distributions, and one such CHMP, CHMP1A (MIM 164010), is required for both MVB formation and regulation of cell cycle progression (Tsang et al., 2006 [PubMed 16730941]).

Molecular Weight:	46.3 kDa
-------------------	----------

Gene ID:	57136
----------	-------

NCBI Accession:	<a href="#">NM_020531</a>
-----------------	---------------------------

HGNC:	57136
-------	-------

## Application Details

Application Notes:	WB 1:500~2000, IHC 1:150, FLOW 1:100,
--------------------	---------------------------------------

Comment:	The concentration of the product may vary between diferrent lots.
----------	---

Restrictions:	For Research Use only
---------------	-----------------------

## Handling

Format:	Liquid
---------	--------

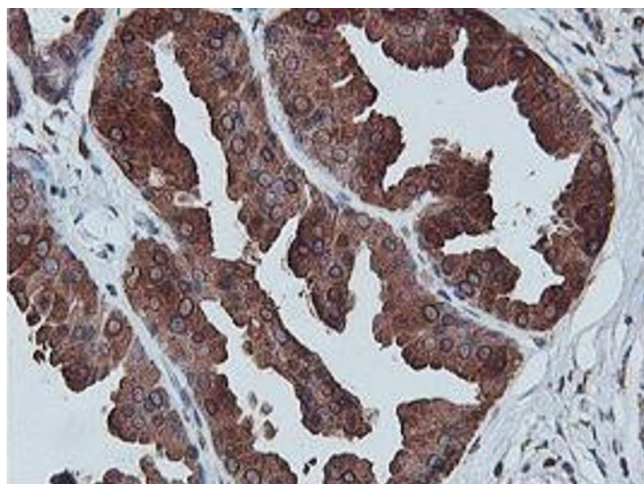
Concentration:	0.5-1.0 mg/mL
----------------	---------------

Buffer:	PBS (PH 7.3) containing 1 % BSA, 50 % glycerol and 0.02 % sodium azide.
---------	---

Preservative:	Sodium azide
---------------	--------------

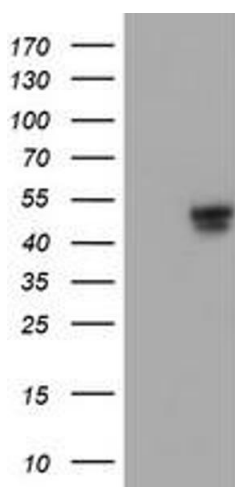
Precaution of Use:	This product contains sodium azide: a POISONOUS AND HAZARDOUS SUBSTANCE which should be handled by trained staff only.
--------------------	--

Storage:	-20 °C
----------	--------



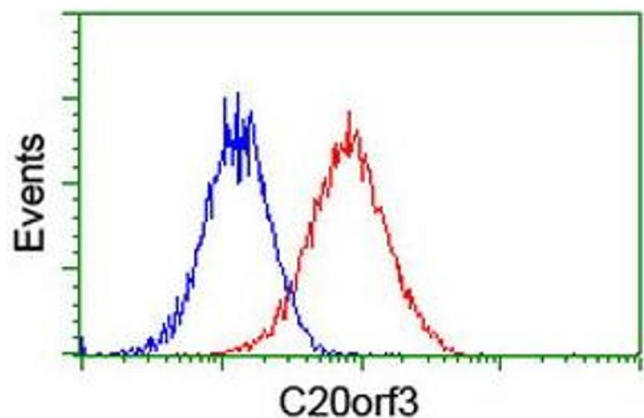
#### Immunohistochemistry

**Image 1.** Immunohistochemical staining of paraffin-embedded Human breast tissue using anti-C20orf3 mouse monoclonal antibody. (ABIN2455502)



#### Western Blotting

**Image 2.** HEK293T cells were transfected with the pCMV6-ENTRY control (Left lane) or pCMV6-ENTRY C20orf3 (Right lane) cDNA for 48 hrs and lysed. Equivalent amounts of cell lysates (5 µg per lane) were separated by SDS-PAGE and immunoblotted with anti-C20orf3.



#### Flow Cytometry

**Image 3.** Flow cytometric Analysis of HeLa cells, using anti-C20orf3 antibody (ABIN2455502), (Red), compared to a nonspecific negative control antibody, (Blue).