

Datasheet for ABIN2716358

anti-ARHGDIA antibody

3 Images

[Go to Product page](#)

Overview

Quantity:	0.1 mL
Target:	ARHGDIA
Reactivity:	Human, Rat, Monkey, Dog
Host:	Mouse
Clonality:	Monoclonal
Conjugate:	This ARHGDIA antibody is un-conjugated
Application:	Western Blotting (WB), Flow Cytometry (FACS)

Product Details

Immunogen:	Full length human recombinant protein of human ARHGDIA (NP_004300) produced in HEK293T cell.
Clone:	1F2
Isotype:	IgG1
Purification:	Purified from mouse ascites fluids by affinity chromatography

Target Details

Target:	ARHGDIA
Alternative Name:	ARHGDIA (ARHGDIA Products)
Molecular Weight:	23.0 kDa
Gene ID:	396

Target Details

NCBI Accession:	NM_004309
HGNC:	396
Pathways:	Neurotrophin Signaling Pathway

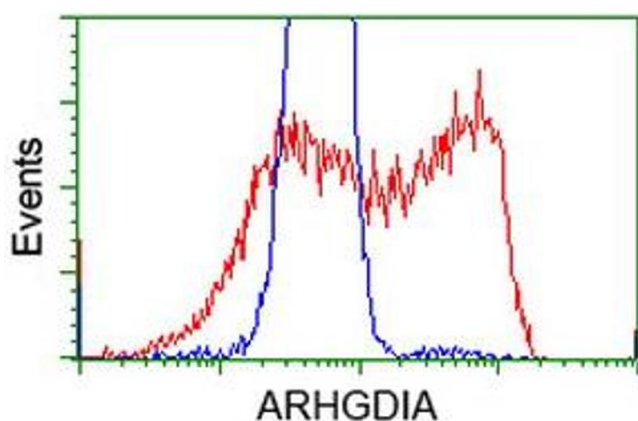
Application Details

Application Notes:	WB 1:200~1000, FLOW 1:100
Comment:	The concentration of the product may vary between different lots.
Restrictions:	For Research Use only

Handling

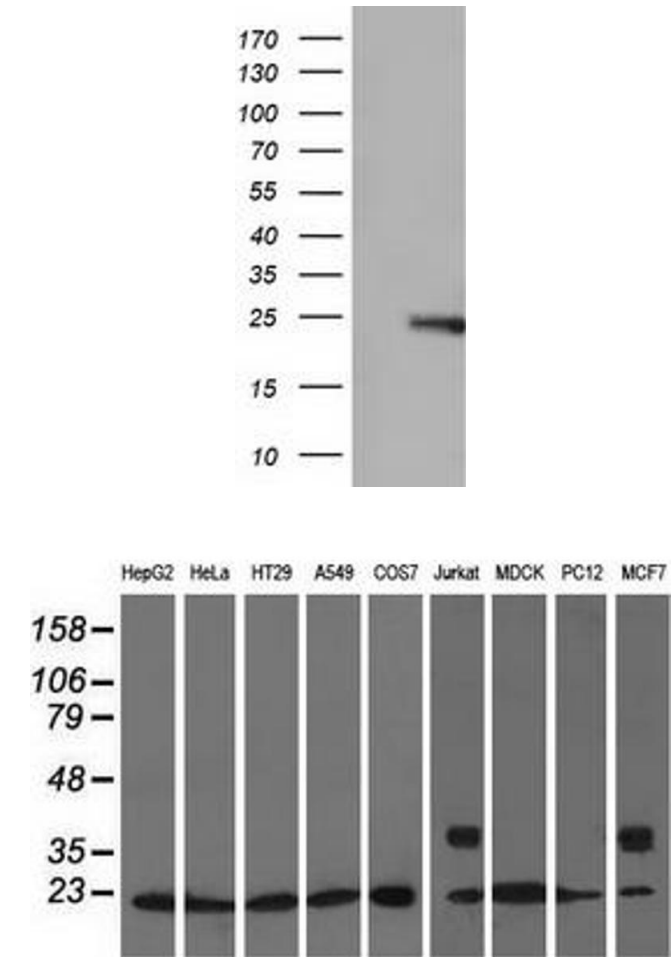
Format:	Liquid
Concentration:	0.5-1.0 mg/mL
Buffer:	PBS (PH 7.3) containing 1 % BSA, 50 % glycerol and 0.02 % sodium azide.
Preservative:	Sodium azide
Precaution of Use:	This product contains sodium azide: a POISONOUS AND HAZARDOUS SUBSTANCE which should be handled by trained staff only.

Images



Flow Cytometry

Image 1. HEK293T cells transfected with either RC200902 overexpress plasmid (Red) or empty vector control plasmid (Blue) were immunostained by anti-ARHGDI A antibody (ABIN2452781), and then analyzed by flow cytometry.



Western Blotting

Image 2. HEK293T cells were transfected with the pCMV6-ENTRY control (Left lane) or pCMV6-ENTRY ARHGDI A (Right lane) cDNA for 48 hrs and lysed. Equivalent amounts of cell lysates (5 µg per lane) were separated by SDS-PAGE and immunoblotted with anti-ARHGDI A.

Western Blotting

Image 3. Western blot analysis of extracts (35 µg) from 9 different cell lines by using anti-ARHGDI A monoclonal antibody.