

Datasheet for ABIN2716586

anti-BDH2 antibody**2** Images[Go to Product page](#)

Overview

Quantity:	0.1 mL
Target:	BDH2
Reactivity:	Human
Host:	Mouse
Clonality:	Monoclonal
Conjugate:	This BDH2 antibody is un-conjugated
Application:	Western Blotting (WB), Immunohistochemistry (IHC), Flow Cytometry (FACS), Immunofluorescence (IF)

Product Details

Immunogen:	Full length human recombinant protein of human BDH2(NP_064524) produced in HEK293T cell.
Clone:	4G4
Isotype:	IgG2a
Purification:	Purified from mouse ascites fluids by affinity chromatography

Target Details

Target:	BDH2
Alternative Name:	BDH2 (BDH2 Products)
Molecular Weight:	26.5 kDa

Target Details

Gene ID:	56898
NCBI Accession:	NM_020139
HGNC:	56898
Pathways:	Transition Metal Ion Homeostasis, Monocarboxylic Acid Catabolic Process

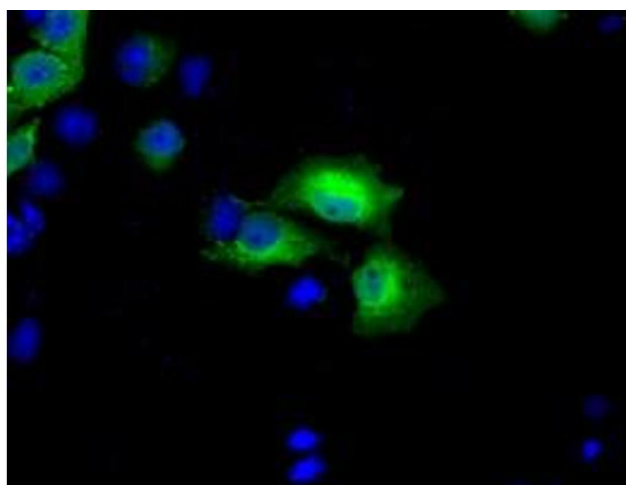
Application Details

Application Notes:	WB 1:2000, IHC 1:50, IF 1:100, FLOW 1:100
Comment:	The concentration of the product may vary between different lots.
Restrictions:	For Research Use only

Handling

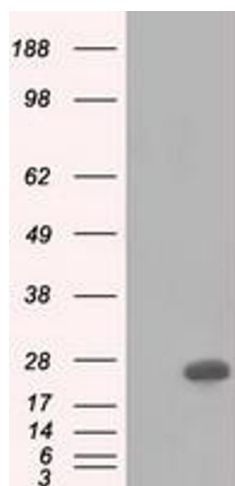
Format:	Liquid
Concentration:	0.5-1.0 mg/mL
Buffer:	PBS (pH 7.3) containing 1 % BSA, 50 % glycerol and 0.02 % sodium azide.
Preservative:	Sodium azide
Precaution of Use:	This product contains sodium azide: a POISONOUS AND HAZARDOUS SUBSTANCE which should be handled by trained staff only.

Images



Immunofluorescence

Image 1. Anti-BDH2 mouse monoclonal antibody (ABIN2452802) immunofluorescent staining of COS7 cells transiently transfected by pCMV6-ENTRY BDH2 (RC210586).



Western Blotting

Image 2. HEK293T cells were transfected with the pCMV6-ENTRY control (Left lane) or pCMV6-ENTRY BDH2 (Right lane) cDNA for 48 hrs and lysed. Equivalent amounts of cell lysates (5 μ g per lane) were separated by SDS-PAGE and immunoblotted with anti-BDH2.