



[Go to Product page](#)

Datasheet for ABIN2716840
anti-C16orf72 antibody

3 Images

Overview

Quantity:	0.1 mL
Target:	C16orf72
Reactivity:	Human
Host:	Mouse
Clonality:	Monoclonal
Conjugate:	This C16orf72 antibody is un-conjugated
Application:	Western Blotting (WB), Immunofluorescence (IF), Flow Cytometry (FACS)

Product Details

Immunogen:	Full length human recombinant protein of human C16orf72 (NP_054836) produced in HEK293T cell.
Clone:	2B8
Isotype:	IgG2a
Purification:	Purified from mouse ascites fluids by affinity chromatography

Target Details

Target:	C16orf72
Alternative Name:	C16orf72 (C16orf72 Products)
Molecular Weight:	30.7 kDa
Gene ID:	29035

Target Details

NCBI Accession: [NM_014117](#)

HGNC: 29035

Application Details

Application Notes: WB 1:2000, IF 1:100, FLOW 1:100

Comment: The concentration of the product may vary between diferrent lots.

Restrictions: For Research Use only

Handling

Format: Liquid

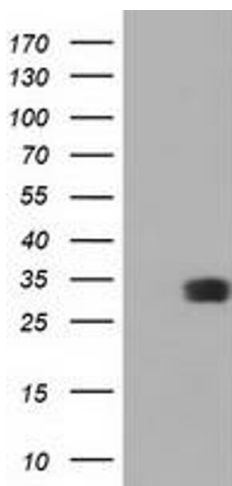
Concentration: 0.5-1.0 mg/mL

Buffer: PBS (PH 7.3) containing 1 % BSA, 50 % glycerol and 0.02 % sodium azide.

Preservative: Sodium azide

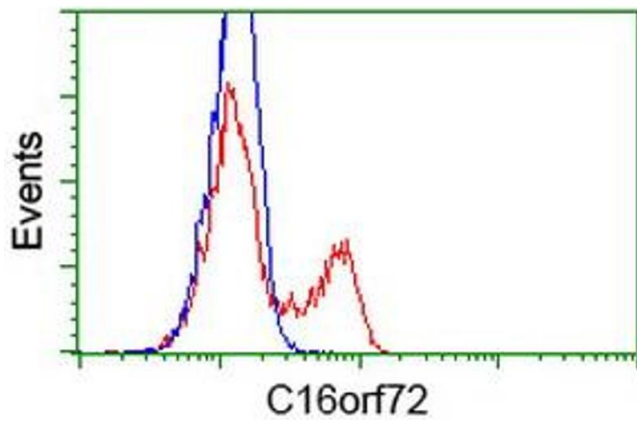
Precaution of Use: This product contains sodium azide: a POISONOUS AND HAZARDOUS SUBSTANCE which should be handled by trained staff only.

Images



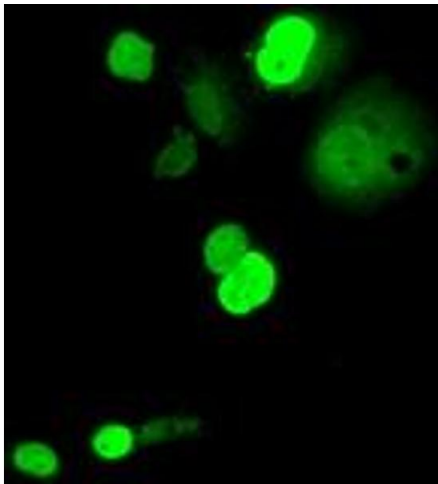
Western Blotting

Image 1. HEK293T cells were transfected with the pCMV6-ENTRY control (Left lane) or pCMV6-ENTRY C16orf72 (Right lane) cDNA for 48 hrs and lysed. Equivalent amounts of cell lysates (5 µg per lane) were separated by SDS-PAGE and immunoblotted with anti-C16orf72.



Flow Cytometry

Image 2. HEK293T cells transfected with either RC214935 overexpress plasmid (Red) or empty vector control plasmid (Blue) were immunostained by anti-C16orf72 antibody (ABIN2452857), and then analyzed by flow cytometry.



Immunofluorescence

Image 3. Anti-C16orf72 mouse monoclonal antibody (ABIN2452857) immunofluorescent staining of COS7 cells transiently transfected by pCMV6-ENTRY C16orf72 (RC214935).