



[Go to Product page](#)

Datasheet for ABIN2716931
anti-CTBP1-AS1 antibody (AA 1-186)

2 Images

Overview

Quantity:	0.1 mL
Target:	CTBP1-AS1
Binding Specificity:	AA 1-186
Reactivity:	Human
Host:	Mouse
Clonality:	Monoclonal
Conjugate:	This CTBP1-AS1 antibody is un-conjugated
Application:	Flow Cytometry (FACS), Immunofluorescence (IF)

Product Details

Immunogen:	Human recombinant protein fragment corresponding to amino acids 1-186 of human C4orf42(NP_443093) produced in E.coil.
Clone:	2C6
Isotype:	IgG1
Characteristics:	Homo sapiens chromosome 4 open reading frame 42 (C4orf42)
Purification:	Purified from mouse ascites fluids by affinity chromatography

Target Details

Target:	CTBP1-AS1
Alternative Name:	C4orf42 (CTBP1-AS1 Products)

Target Details

Molecular Weight: 19.5 kDa

Gene ID: 92070

NCBI Accession: [NM_052861](#)

HGNC: 92070

Application Details

Application Notes: IF 1:100, FLOW 1:100,

Comment: The concentration of the product may vary between different lots.

Restrictions: For Research Use only

Handling

Format: Liquid

Concentration: 0.5-1.0 mg/mL

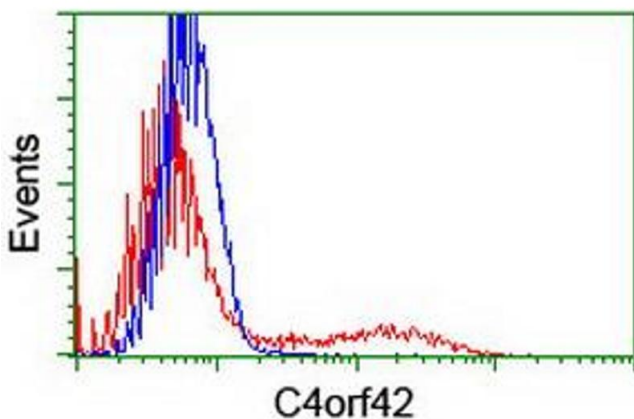
Buffer: PBS (PH 7.3) containing 1 % BSA, 50 % glycerol and 0.02 % sodium azide.

Preservative: Sodium azide

Precaution of Use: This product contains sodium azide: a POISONOUS AND HAZARDOUS SUBSTANCE which should be handled by trained staff only.

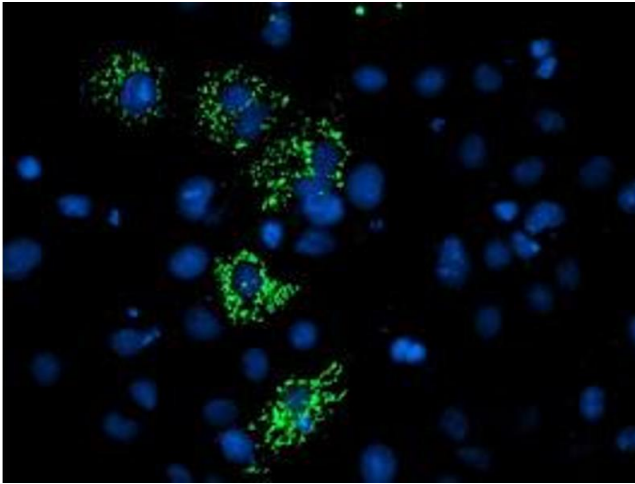
Storage: -20 °C

Images



Flow Cytometry

Image 1. HEK293T cells transfected with either RC213725 overexpress plasmid (Red) or empty vector control plasmid (Blue) were immunostained by anti-C4orf42 antibody (ABIN2454986), and then analyzed by flow cytometry.



Immunofluorescence

Image 2. Anti-C4orf42 mouse monoclonal antibody (ABIN2454986) immunofluorescent staining of COS7 cells transiently transfected by pCMV6-ENTRY C4orf42 (RC213725).