



[Go to Product page](#)

Datasheet for ABIN2717156  
**anti-CBWD1 antibody**

3 Images

### Overview

Quantity:	0.1 mL
Target:	CBWD1
Reactivity:	Human, Rat, Dog, Monkey
Host:	Mouse
Clonality:	Monoclonal
Conjugate:	This CBWD1 antibody is un-conjugated
Application:	Western Blotting (WB), Flow Cytometry (FACS), Immunofluorescence (IF), Immunohistochemistry (IHC)

### Product Details

Immunogen:	Full length human recombinant protein of human CBWD1 (NP_060961) produced in HEK293T cell.
Clone:	4D4
Isotype:	IgG2b
Purification:	Purified from mouse ascites fluids by affinity chromatography

### Target Details

Target:	CBWD1
Alternative Name:	CBWD1 ( <a href="#">CBWD1 Products</a> )
Molecular Weight:	43.9 kDa

## Target Details

Gene ID: 55871

NCBI Accession: [NM\\_018491](#)

HGNC: 55871

## Application Details

Application Notes: WB 1:500~2000, IHC 1:150, IF 1:100, FLOW 1:100

Comment: The concentration of the product may vary between different lots.

Restrictions: For Research Use only

## Handling

Format: Liquid

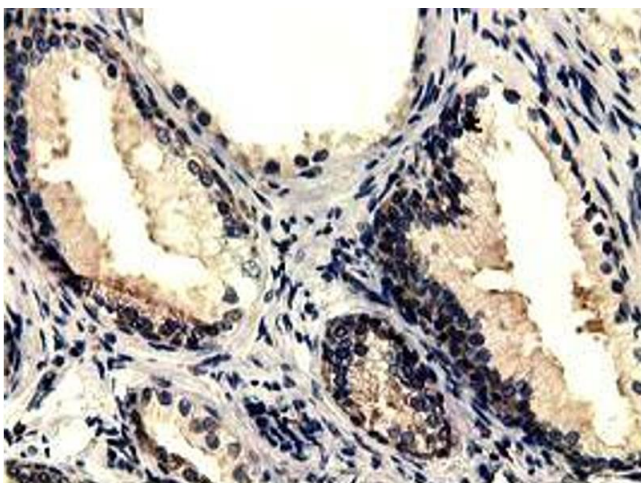
Concentration: 0.5-1.0 mg/mL

Buffer: PBS (PH 7.3) containing 1 % BSA, 50 % glycerol and 0.02 % sodium azide.

Preservative: Sodium azide

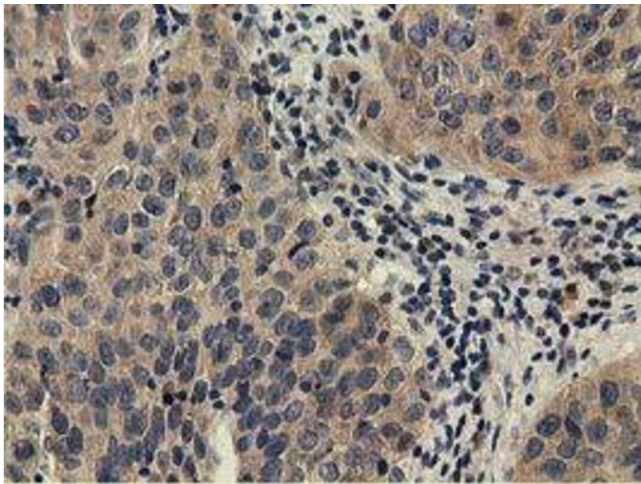
Precaution of Use: This product contains sodium azide: a POISONOUS AND HAZARDOUS SUBSTANCE which should be handled by trained staff only.

## Images



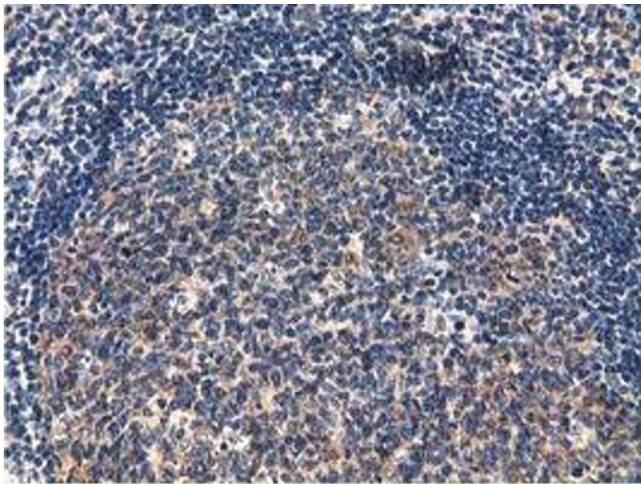
### Immunohistochemistry

**Image 1.** Immunohistochemical staining of paraffin-embedded Human prostate tissue using anti-CBWD1 mouse monoclonal antibody. (ABIN2452877)



#### Immunohistochemistry

**Image 2.** Immunohistochemical staining of paraffin-embedded Carcinoma of Human bladder tissue using anti-CBWD1 mouse monoclonal antibody. (ABIN2452877)



#### Immunohistochemistry

**Image 3.** Immunohistochemical staining of paraffin-embedded Human lymph node tissue using anti-CBWD1 mouse monoclonal antibody. (ABIN2452877)