

Datasheet for ABIN2717890

**anti-SIGLEC9 antibody****3** Images[Go to Product page](#)

## Overview

Quantity:	0.1 mL
Target:	SIGLEC9
Reactivity:	Human, Dog, Monkey
Host:	Mouse
Clonality:	Monoclonal
Conjugate:	This SIGLEC9 antibody is un-conjugated
Application:	Western Blotting (WB), Immunohistochemistry (IHC), Immunofluorescence (IF)

## Product Details

Immunogen:	Full length human recombinant protein of human SIGLEC9 (NP_055256) produced in HEK293T cell.
Clone:	6D8
Isotype:	IgG1
Purification:	Purified from mouse ascites fluids by affinity chromatography

## Target Details

Target:	SIGLEC9
Alternative Name:	SIGLEC9 ( <a href="#">SIGLEC9 Products</a> )
Molecular Weight:	50.1 kDa
Gene ID:	27180

## Target Details

NCBI Accession: [NM\\_014441](#)

HGNC: 27180

## Application Details

Application Notes: WB 1:500~2000, IHC 1:50, IF 1:50,

Comment: The concentration of the product may vary between diferrent lots.

Restrictions: For Research Use only

## Handling

Format: Liquid

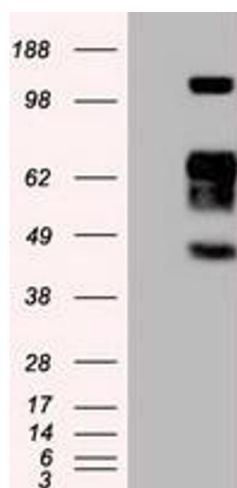
Concentration: 0.5-1.0 mg/mL

Buffer: PBS ( pH 7.3) containing 1 % BSA, 50 % glycerol and 0.02 % sodium azide.

Preservative: Sodium azide

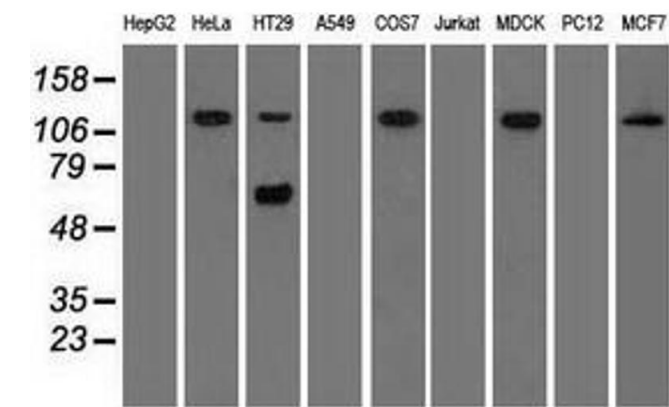
Precaution of Use: This product contains sodium azide: a POISONOUS AND HAZARDOUS SUBSTANCE which should be handled by trained staff only.

## Images



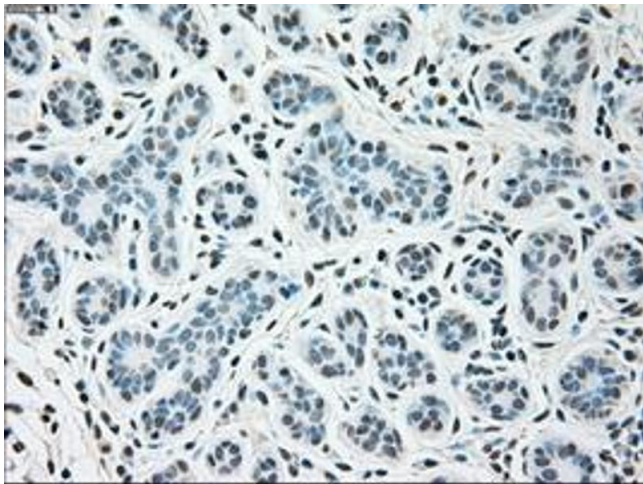
### Western Blotting

**Image 1.** HEK293T cells were transfected with the pCMV6-ENTRY control (Left lane) or pCMV6-ENTRY SIGLEC9 (Right lane) cDNA for 48 hrs and lysed. Equivalent amounts of cell lysates (5 µg per lane) were separated by SDS-PAGE and immunoblotted with anti-SIGLEC9.



Western Blotting

**Image 2.** Western blot analysis of extracts (35 µg) from 9 different cell lines by using anti-SIGLEC9 monoclonal antibody.



Immunohistochemistry

**Image 3.** Immunohistochemical staining of paraffin-embedded breast tissue using anti-SIGLEC9 mouse monoclonal antibody. (ABIN2452496, Dilution 1:50)