

Datasheet for ABIN271809  
**anti-S100A1 antibody**

2 Images



[Go to Product page](#)

## Overview

Quantity:	0.1 mg
Target:	S100A1
Reactivity:	Human, Mouse, Rat
Host:	Rabbit
Clonality:	Polyclonal
Conjugate:	This S100A1 antibody is un-conjugated
Application:	Western Blotting (WB), Immunohistochemistry (Paraffin-embedded Sections) (IHC (p)), Enzyme Immunoassay (EIA)

## Product Details

Specificity:	This antibody detects endogenous levels of S100A1 protein. (region surrounding Ala18)
Cross-Reactivity (Details):	Species reactivity (expected):Mouse and Rat. Species reactivity (tested):Human.
Purification:	Affinity-Chromatography using epitope-specific immunogen

## Target Details

Target:	S100A1
Alternative Name:	S100A1 ( <a href="#">S100A1 Products</a> )
Background:	S100 calcium binding protein A1 (S100-alpha/ S100A1), it is a member of the S100 family of proteins containing 2 EF-hand calcium-binding motifs. S100 proteins are localized in the cytoplasm and/or nucleus of a wide range of cells, and involved in the regulation of a number of

## Target Details

cellular processes such as cell cycle progression and differentiation. S100 genes include at least 13 members which are located as a cluster on chromosome 1q21. This protein may function in stimulation of Ca<sup>2+</sup>-induced Ca<sup>2+</sup> release, inhibition of microtubule assembly, and inhibition of protein kinase C-mediated phosphorylation. Reduced expression of this protein has been implicated in cardiomyopathies. Synonyms: S-100 protein alpha chain, S-100 protein subunit alpha, S100 alpha, S100 calcium-binding protein A1, S100-A1, S100A

Molecular Weight: approx. 10 kDa

Gene ID: 6271

NCBI Accession: [NP\\_006262](#)

UniProt: [P23297](#)

Pathways: [Regulation of Muscle Cell Differentiation](#), [Toll-Like Receptors Cascades](#), [S100 Proteins](#)

## Application Details

Application Notes: ELISA: 1: 20000approx. 1: 40000WB: 1: 500approx. 1: 1000IHC: 1: 50approx. 1: 200IF: 1: 50approx. 1: 200.  
Other applications not tested.  
Optimal dilutions are dependent on conditions and should be determined by the user.

Restrictions: For Research Use only

## Handling

Concentration: 1.0 mg/mL

Buffer: Phosphate buffered saline (PBS), pH ~7.2, 0.05 % Sodium Azide

Preservative: Sodium azide

Precaution of Use: This product contains sodium azide: a POISONOUS AND HAZARDOUS SUBSTANCE which should be handled by trained staff only.

Handling Advice: Avoid repeated freezing and thawing.

Storage: 4 °C/-20 °C

Storage Comment: Store the antibody undiluted at 2-8 °C for one month or (in aliquots) at -20 °C for longer .

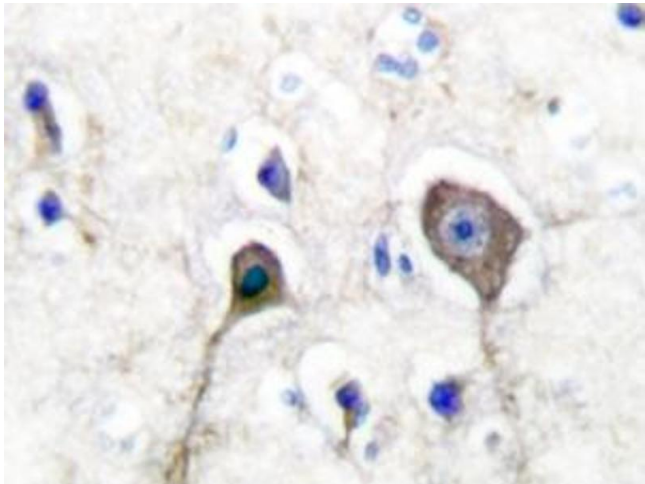


Image 1.

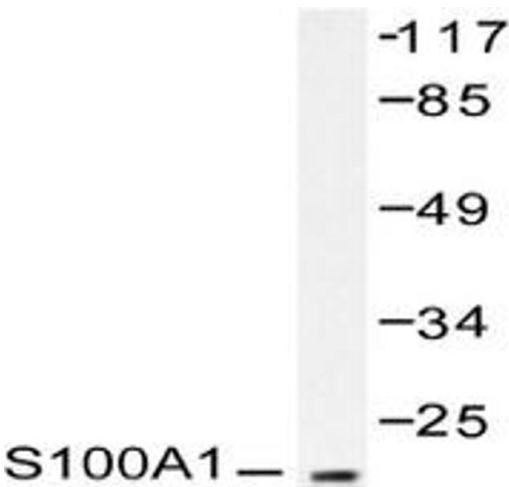


Image 2.