



[Go to Product page](#)

Datasheet for ABIN2718566  
**C1orf61 Protein (His tag)**

1 Image

Overview

Quantity:	50 µg
Target:	C1orf61 (C1ORF61)
Origin:	Human
Source:	Escherichia coli (E. coli)
Protein Type:	Recombinant
Purification tag / Conjugate:	This C1orf61 protein is labelled with His tag.
Application:	Antibody Production (AbP), Standard (STD)

Product Details

Characteristics:	<ul style="list-style-type: none"><li>• Recombinant human Chromosome 1 open reading frame 61 (C1orf61), full length, with N-terminal HIS tag, expressed in E.Coli, 50 µg (full length, N-term HIS tag) protein expressed in E.coli.</li><li>• Produced with end-sequenced ORF clone</li></ul>
------------------	---

Purity:	> 80 % as determined by SDS-PAGE and Coomassie blue staining
---------	--

Target Details

Target:	C1orf61 (C1ORF61)
Abstract:	<a href="#">C1ORF61 Products</a>
Molecular Weight:	17 kDa
NCBI Accession:	<a href="#">NP_006356</a>

## Application Details

Application Notes: Recombinant human proteins can be used for:  
Native antigens for optimized antibody production  
Positive controls in ELISA and other antibody assays

Comment: The tag is located at the N-terminal.

Restrictions: For Research Use only

## Handling

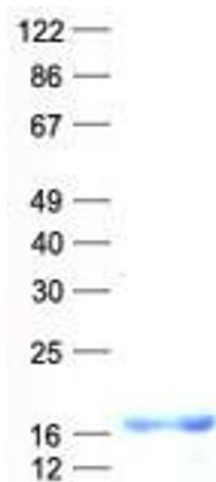
Concentration: 50 µg/mL

Buffer: 50 mM Tris, 8M Urea, pH 8.0.

Storage: -80 °C

Storage Comment: Store at -80°C. Thaw on ice, aliquot to individual single-use tubes, and then re-freeze immediately. Only 2-3 freeze thaw cycles are recommended.

## Images



### Western Blotting

**Image 1.** Validation with Western Blot