

Datasheet for ABIN2718638 **anti-Claudin 5 antibody**

2 Images



[Go to Product page](#)

Overview

Quantity:	0.1 mL
Target:	Claudin 5 (CLDN5)
Reactivity:	Human
Host:	Mouse
Clonality:	Monoclonal
Conjugate:	This Claudin 5 antibody is un-conjugated
Application:	Immunofluorescence (IF), Flow Cytometry (FACS)

Product Details

Immunogen:	Full length human recombinant protein of human CLDN5(NP_003268) produced in HEK293T cell.
Clone:	1G4
Isotype:	IgG1
Purification:	Purified from mouse ascites fluids by affinity chromatography

Target Details

Target:	Claudin 5 (CLDN5)
Alternative Name:	CLDN5 (CLDN5 Products)
Molecular Weight:	23 kDa
Gene ID:	7122

Target Details

NCBI Accession: [NM_003277](#)

HGNC: 7122

Pathways: [Hepatitis C](#)

Application Details

Application Notes: IF 1:100, FLOW 1:100,

Comment: The concentration of the product may vary between different lots.

Restrictions: For Research Use only

Handling

Format: Liquid

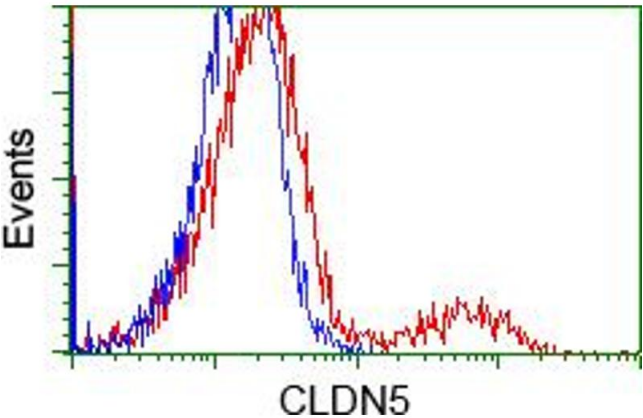
Concentration: 0.5-1.0 mg/mL

Buffer: PBS (pH 7.3) containing 1 % BSA, 50 % glycerol and 0.02 % sodium azide.

Preservative: Sodium azide

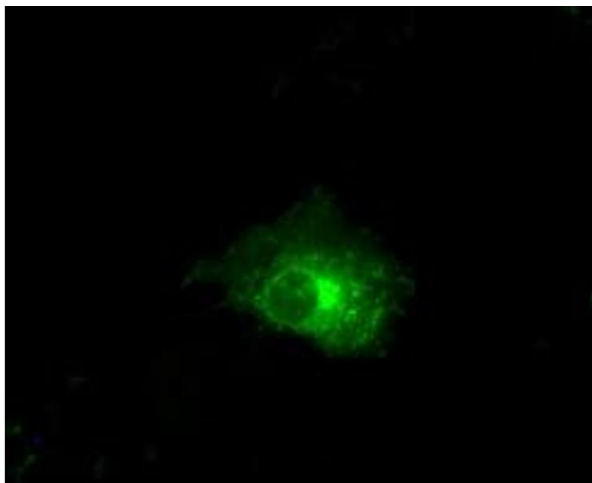
Precaution of Use: This product contains sodium azide: a POISONOUS AND HAZARDOUS SUBSTANCE which should be handled by trained staff only.

Images



Flow Cytometry

Image 1. HEK293T cells transfected with either pCMV6-ENTRY CLDN5 (RC207122) (Red) or empty vector control plasmid (Blue) were immunostained with anti-CLDN5 mouse monoclonal (ABIN2452908), and then analyzed by flow cytometry.



Immunofluorescence

Image 2. Anti-CLDN5 mouse monoclonal antibody (ABIN2452908) immunofluorescent staining of COS7 cells transiently transfected by pCMV6-ENTRY CLDN5 (RC207122).