



[Go to Product page](#)

Datasheet for ABIN2718762

C1RL Protein (His tag)

1 Image

Overview

Quantity:	50 µg
Target:	C1RL
Origin:	Human
Source:	Escherichia coli (E. coli)
Protein Type:	Recombinant
Purification tag / Conjugate:	This C1RL protein is labelled with His tag.
Application:	Antibody Production (AbP), Standard (STD)

Product Details

Characteristics:	<ul style="list-style-type: none">• Recombinant human C1RL (full length, N-term HIS tag) protein expressed in E.coli.• Produced with end-sequenced ORF clone
Purity:	> 80 % as determined by SDS-PAGE and Coomassie blue staining

Target Details

Target:	C1RL
Abstract:	C1RL Products
Molecular Weight:	53.9 kDa
NCBI Accession:	NP_057630

Application Details

Application Notes: Recombinant human proteins can be used for:
Native antigens for optimized antibody production
Positive controls in ELISA and other antibody assays

Comment: The tag is located at the N-terminal.

Restrictions: For Research Use only

Handling

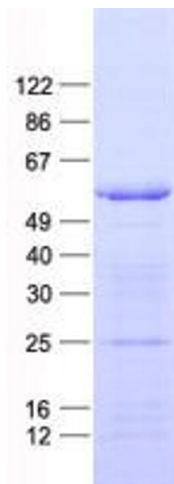
Concentration: 50 µg/mL

Buffer: 50 mM Tris,8M Urea, pH 8.0.

Storage: -80 °C

Storage Comment: Store at -80°C. Thaw on ice, aliquot to individual single-use tubes, and then re-freeze immediately. Only 2-3 freeze thaw cycles are recommended.

Images



Western Blotting

Image 1. Validation with Western Blot