

Datasheet for ABIN271884
anti-Dynamin 1 antibody

2 Images



[Go to Product page](#)

Overview

Quantity:	0.1 mg
Target:	Dynamin 1 (DNM1)
Reactivity:	Human, Mouse, Rat
Host:	Rabbit
Clonality:	Polyclonal
Conjugate:	This Dynamin 1 antibody is un-conjugated
Application:	Western Blotting (WB), Immunohistochemistry (Paraffin-embedded Sections) (IHC (p)), Enzyme Immunoassay (EIA)

Product Details

Specificity:	This antibody detects endogenous levels of Dynamin-1 protein. (region surrounding Val768)
Cross-Reactivity (Details):	Species reactivity (expected):Mouse and Rat. Species reactivity (tested):Human.
Purification:	Affinity Chromatography using epitope-specific immunogen.

Target Details

Target:	Dynamin 1 (DNM1)
Alternative Name:	Dynamin-1 (DNM1 Products)
Background:	Members of the Dynamin family, including Dynamin I and Dynamin II, are GTPase, microtubule-associated proteins which are involved in endocytosis, synaptic transmission and neurogenesis. Dynamin I is localized to the central nervous system, while Dynamin II exhibits

Target Details

ubiquitous distribution with highest expression in testis. Both Dynamin proteins contain SH3 and proline-rich domains that mediate interactions between the Dynamins and effectors of their GTPase activity. The interactions with these effectors, which include microtubules, acidic phospholipids and SH3 domain-containing proteins, are required for rapid endocytosis. Dynamin I appears to be recruited to Clathrin coated pits by SH3 domain interaction with Amphiphysin, a protein highly expressed in brain.Synonyms: DNM, DNM1

Molecular Weight:	approx. 98 kDa
Gene ID:	1759
NCBI Accession:	NP_001005336
UniProt:	Q05193
Pathways:	Toll-Like Receptors Cascades , CXCR4-mediated Signaling Events , Thromboxane A2 Receptor Signaling

Application Details

Application Notes:	ELISA: 1:5000approx. 1:10000. WB: 1:500approx. 1:1000. IHC: 1:50approx. 1:200. Other applications not tested. Optimal dilutions are dependent on conditions and should be determined by the user.
Restrictions:	For Research Use only

Handling

Concentration:	1.0 mg/mL
Buffer:	Phosphate buffered saline (PBS), pH ~7.2 containing 0.05 % Sodium Azide as preservative.
Preservative:	Sodium azide
Precaution of Use:	This product contains sodium azide: a POISONOUS AND HAZARDOUS SUBSTANCE which should be handled by trained staff only.
Handling Advice:	Avoid repeated freezing and thawing.
Storage:	4 °C/-20 °C
Storage Comment:	Store the antibody undiluted at 2-8 °C for one month or (in aliquots) at -20 °C for longer.

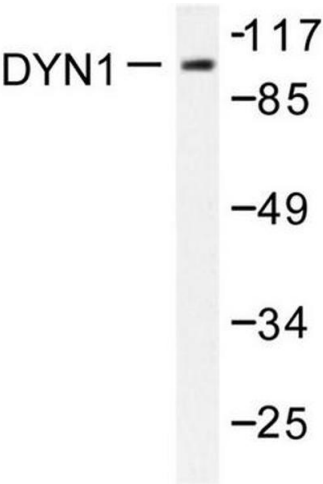


Image 1.

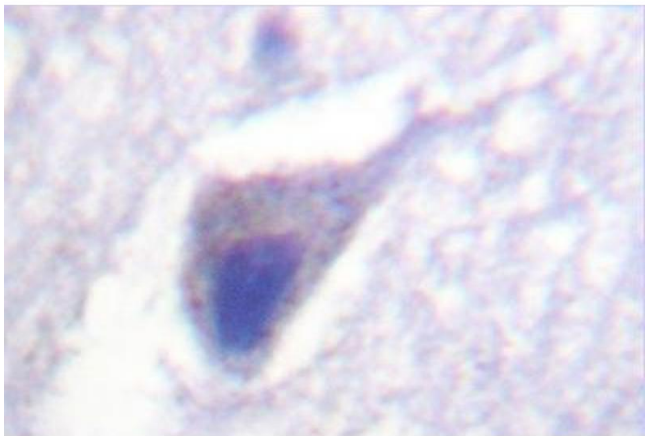


Image 2.