

Datasheet for ABIN2718987

**anti-CYP2E1 antibody**

3 Images

[Go to Product page](#)

## Overview

Quantity:	0.1 mL
Target:	CYP2E1
Reactivity:	Human
Host:	Mouse
Clonality:	Monoclonal
Conjugate:	This CYP2E1 antibody is un-conjugated
Application:	Western Blotting (WB), Immunohistochemistry (IHC), Immunofluorescence (IF)

## Product Details

Immunogen:	Full length human recombinant protein of human CYP2E1 (NP_000764) produced in HEK293T cell.
Clone:	5B9
Isotype:	IgG1
Purification:	Purified from mouse ascites fluids by affinity chromatography

## Target Details

Target:	CYP2E1
Alternative Name:	CYP2E1 ( <a href="#">CYP2E1 Products</a> )
Molecular Weight:	56.8 kDa
Gene ID:	1571

## Target Details

NCBI Accession: [NM\\_000773](#)

HGNC: 1571

## Application Details

Application Notes: WB 1:500, IHC 1:50, IF 1:100,

Comment: The concentration of the product may vary between diferrent lots.

Restrictions: For Research Use only

## Handling

Format: Liquid

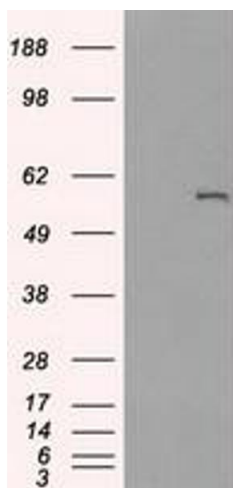
Concentration: 0.5-1.0 mg/mL

Buffer: PBS ( pH 7.3) containing 1 % BSA, 50 % glycerol and 0.02 % sodium azide.

Preservative: Sodium azide

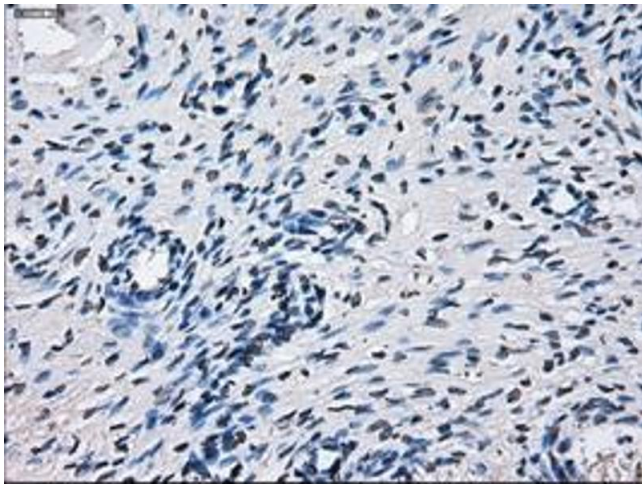
Precaution of Use: This product contains sodium azide: a POISONOUS AND HAZARDOUS SUBSTANCE which should be handled by trained staff only.

## Images



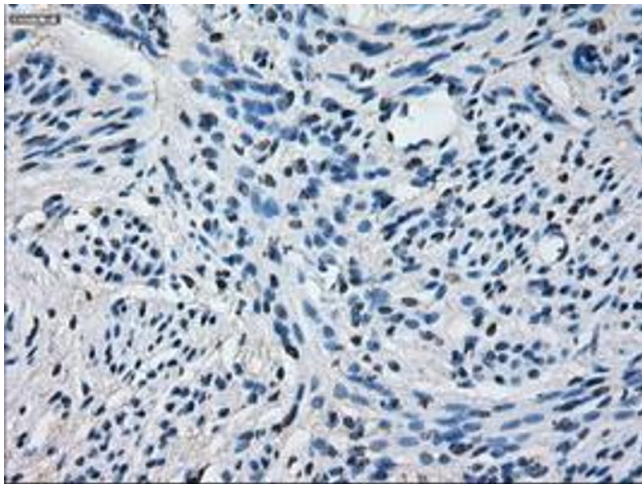
### Western Blotting

**Image 1.** HEK293T cells were transfected with the pCMV6-ENTRY control (Left lane) or pCMV6-ENTRY CYP2E1 (Right lane) cDNA for 48 hrs and lysed. Equivalent amounts of cell lysates (5 µg per lane) were separated by SDS-PAGE and immunoblotted with anti-CYP2E1.



#### Immunohistochemistry

**Image 2.** Immunohistochemical staining of paraffin-embedded Ovary tissue using anti-CYP2E1 mouse monoclonal antibody. (ABIN2452934, Dilution 1:50)



#### Immunohistochemistry

**Image 3.** Immunohistochemical staining of paraffin-embedded endometrium tissue using anti-CYP2E1 mouse monoclonal antibody. (ABIN2452934, Dilution 1:50)