

Datasheet for ABIN271899

anti-Mammaglobin A antibody[Go to Product page](#)**1** Image

Overview

Quantity:	0.1 mg
Target:	Mammaglobin A (SCGB2A2)
Reactivity:	Human, Rat
Host:	Rabbit
Clonality:	Polyclonal
Conjugate:	This Mammaglobin A antibody is un-conjugated
Application:	Western Blotting (WB), Immunohistochemistry (Paraffin-embedded Sections) (IHC (p)), Immunofluorescence (IF), Enzyme Immunoassay (EIA)

Product Details

Specificity:	This antibody detects endogenous levels of Mammaglobin/SCGB2A2 protein. (region surrounding Phe66)
Cross-Reactivity (Details):	Species reactivity (tested): Human and Rat.
Purification:	Affinity Chromatography using epitope-specific immunogen.

Target Details

Target:	Mammaglobin A (SCGB2A2)
Abstract:	SCGB2A2 Products
Background:	Secretoglobins (also called lipophilins or mammaglobins) are small secreted proteins of endocrine-responsive organs and mucosal epithelia that form multimeric complexes and correlate with the development of various human cancers. Lipophilin A and Lipophilin B are

Target Details

orthologs of prostatein (estramustine-binding protein), the major secretory glycoprotein of the rat ventral prostate gland. Lipophilin A, also designated LIPA, LPHA and secretoglobin, family 1D, member 1 (SCGB1D1), is a component of a heterodimeric molecule present in human tears. Lipophilin B, also designated LIPB, LPHB and secretoglobin, family 1D, member 2 (SCGB1D2), mRNA can be overexpressed in breast tumors and shows a high degree of correlation with the mRNA expression profile of mammaglobin. Histological detection in breast tissue of Mammaglobin A, also designated MGB1 and secretoglobin, family 2A, member 2 (SCGB2A2) and Mammaglobin B, also designated MGB2, Lipophilin C, LPHC, UGB3 and SCGB2A2, is a reliable diagnostic marker for breast tumors. Synonyms: MGB1, Mammaglobin-1, Mammaglobin-A, Prostatein peptide C3, Prostatic steroid-binding protein C3, Secretoglobin family 2A member 2, UGB2

Molecular Weight: approx. 20 kDa

Gene ID: 4250

NCBI Accession: [NP_002402](#)

UniProt: [Q13296](#)

Application Details

Application Notes: ELISA: 1/1000-1/5000. Western Blot: 1/500-1/1000. Immunohistochemistry: 1/50-1/200. Immunofluorescence: 1/50-1/200. Other applications not tested. Optimal dilutions are dependent on conditions and should be determined by the user.

Restrictions: For Research Use only

Handling

Concentration: 1.0 mg/mL

Buffer: Phosphate buffered saline (PBS), pH ~7.2, 0.05 % Sodium Azide

Preservative: Sodium azide

Precaution of Use: This product contains sodium azide: a POISONOUS AND HAZARDOUS SUBSTANCE which should be handled by trained staff only.

Handling Advice: Avoid repeated freezing and thawing.

Storage: 4 °C/-20 °C

Handling

Storage Comment: Store the antibody undiluted at 2-8 °C for one month or (in aliquots) at -20 °C for longer.

Images

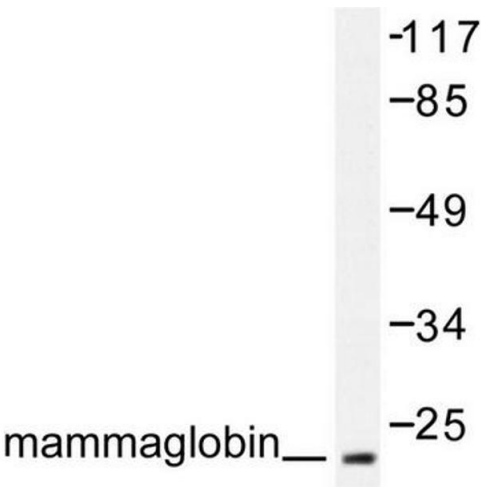


Image 1.