



[Go to Product page](#)

Datasheet for ABIN271921
anti-PLA2G4B antibody

2 Images

Overview

Quantity:	0.1 mg
Target:	PLA2G4B
Reactivity:	Human, Mouse, Rat
Host:	Rabbit
Clonality:	Polyclonal
Conjugate:	This PLA2G4B antibody is un-conjugated
Application:	Western Blotting (WB), Immunofluorescence (IF), Immunohistochemistry (Paraffin-embedded Sections) (IHC (p))

Product Details

Specificity:	This antibody detects endogenous levels of c-PLA2 protein. (region surrounding asn499)
Cross-Reactivity (Details):	Species reactivity (expected):Mouse and Rat. Species reactivity (tested):Human.
Purification:	Affinity Chromatography using epitope-specific immunogen.

Target Details

Target:	PLA2G4B
Alternative Name:	PLA2G4B (PLA2G4B Products)
Background:	Phospholipase A2s (PLA2s) constitute a family of esterases that hydrolyze the sn-2-acyl ester bond in glycerophospholipid molecules. These enzymes are generally calcium-dependent and have been found both intra- and extracellularly. By hydrolyzing the sn-2 bond in

Target Details

glycerophospholipids, PLA2s release fatty acids. One such fatty acid, arachidonic acid, generates the substrates for the initiation of the arachidonic acid cascade that produces various eicosanoids (i.e. prostaglandins, leukotrienes and thromboxanes), many of which are potent mediators of inflammation. PLA2s include both the relatively low molecular weight type I and type II enzymes and the form known as cytoplasmic PLA2 (cPLA2). cPLA2 is present in the cytosol of various cells and tissues including platelets, macrophages and monoblasts, and preferentially hydrolyzes the sn-2 position of phospholipid molecules, releasing free arachidonate. Synonyms: Cytosolic phospholipase A2 beta, Phospholipase A2 group IVB, cPLA2-beta, phospholipase A2 beta

Molecular Weight:	approx. 100 kDa
Gene ID:	100137049
NCBI Accession:	NP_001108105
UniProt:	P0C869
Pathways:	ER-Nucleus Signaling , VEGF Signaling

Application Details

Application Notes:	ELISA: (1/10000approx. 1/20000). Western Blot (1/500approx. 1/1000). Immunohistochemistry (1/50approx. 1/200). Immunofluorescence (1/50approx. 1/200) Other applications not tested. Optimal dilutions are dependent on conditions and should be determined by the user.
Restrictions:	For Research Use only

Handling

Concentration:	1.0 mg/mL
Buffer:	Phosphate buffered saline (PBS), pH 7.2, 0.05 % Sodium Azide
Preservative:	Sodium azide
Precaution of Use:	This product contains sodium azide: a POISONOUS AND HAZARDOUS SUBSTANCE which should be handled by trained staff only.
Handling Advice:	Avoid repeated freezing and thawing.
Storage:	4 °C/-20 °C
Storage Comment:	Store the antibody undiluted at 2-8 °C for one month or (in aliquots) at -20 °C for longer.

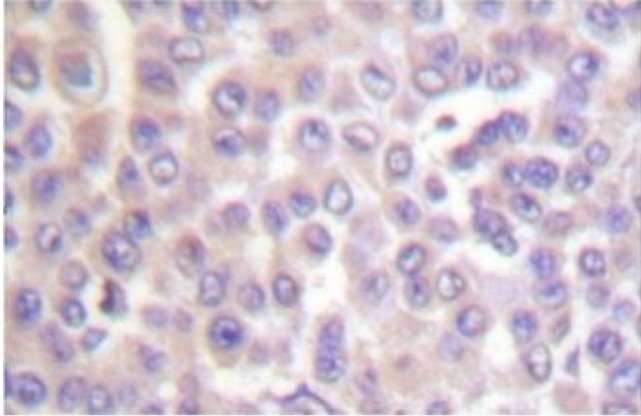


Image 1.

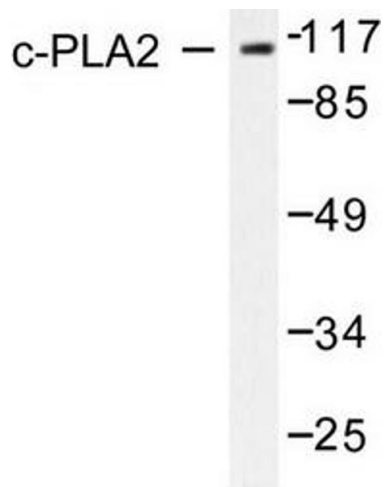


Image 2.