

Datasheet for ABIN2719237

## DBNDD2 Protein (Transcript Variant 3) (Myc-DYKDDDDK Tag)



[Go to Product page](#)

### 1 Image

#### Overview

|                               |  |
|-------------------------------|--|
| Quantity:                     | 20 µg  |
| Target:                       | DBNDD2   |
| Protein Characteristics:      | Transcript Variant 3                                   |
| Origin:                       | Human  |
| Source:                       | HEK-293 Cells  |
| Protein Type:                 | Recombinant  |
| Purification tag / Conjugate: | This DBNDD2 protein is labelled with Myc-DYKDDDDK Tag. |
| Application:                  | Antibody Production (AbP), Standard (STD)              |

#### Product Details

|                  |  |
|------------------|--|
| Characteristics: | <ul style="list-style-type: none"><li>• Recombinant human DBNDD2 (transcript variant 3) protein expressed in HEK293 cells.</li><li>• Produced with end-sequenced ORF clone</li></ul> |
| Purity:          | > 80 % as determined by SDS-PAGE and Coomassie blue staining   |

#### Target Details

|                   |  |
|-------------------|--|
| Target:           | DBNDD2                                     |
| Alternative Name: | Dbnnd2 ( <a href="#">DBNDD2 Products</a> ) |
| Molecular Weight: | 17.3 kDa                                   |
| NCBI Accession:   | <a href="#">NP_001041688</a>               |

## Application Details

Application Notes: Recombinant human proteins can be used for:  
Native antigens for optimized antibody production  
Positive controls in ELISA and other antibody assays

Comment: The tag is located at the C-terminal.

Restrictions: For Research Use only

## Handling

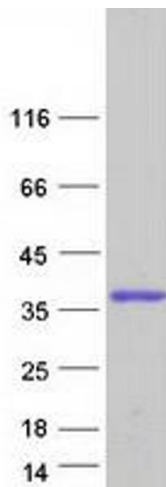
Concentration: 50 µg/mL

Buffer: 25 mM Tris.HCl, pH 7.3, 100 mM glycine, 10 % glycerol.

Storage: -80 °C

Storage Comment: Store at -80°C. Thaw on ice, aliquot to individual single-use tubes, and then re-freeze immediately. Only 2-3 freeze thaw cycles are recommended.

## Images



### Western Blotting

**Image 1.** Validation with Western Blot