

Datasheet for ABIN2719242  
**DCAF12 Protein (His tag)**



[Go to Product page](#)

1 Image

Overview

Quantity:	50 µg
Target:	DCAF12
Origin:	Human
Source:	Escherichia coli (E. coli)
Protein Type:	Recombinant
Purification tag / Conjugate:	This DCAF12 protein is labelled with His tag.
Application:	Antibody Production (AbP), Standard (STD)

Product Details

- Characteristics:
- Recombinant human DCAF12 (full length, N-term HIS tag) protein expressed in E.coli.
  - Produced with end-sequenced ORF clone

Purity: > 80 % as determined by SDS-PAGE and Coomassie blue staining

Target Details

Target:	DCAF12
Alternative Name:	Dcaf12 ( <a href="#">DCAF12 Products</a> )
Background:	This gene encodes a WD repeat-containing protein that interacts with the COP9 signalosome, a macromolecular complex that interacts with cullin-RING E3 ligases and regulates their activity by hydrolyzing cullin-Nedd8 conjugates.
Molecular Weight:	50.3 kDa

## Target Details

---

NCBI Accession: [NP\\_056212](#)

## Application Details

---

Application Notes: Recombinant human proteins can be used for:  
Native antigens for optimized antibody production  
Positive controls in ELISA and other antibody assays

Comment: The tag is located at the N-terminal.

Restrictions: For Research Use only

## Handling

---

Concentration: 50 µg/mL

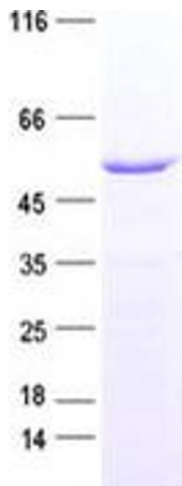
Buffer: 25 mM Tris, pH 8.0, 150 mM NaCl, 10 % glycerol, 1 % Sarkosyl.

Storage: -80 °C

Storage Comment: Store at -80°C. Thaw on ice, aliquot to individual single-use tubes, and then re-freeze immediately. Only 2-3 freeze thaw cycles are recommended.

## Images

---



### Western Blotting

**Image 1.** Validation with Western Blot