

Datasheet for ABIN2719250
DCPS Protein (Myc-DYKDDDDK Tag)[Go to Product page](#)

1 Image

Overview

Quantity:	20 µg
Target:	DCPS
Origin:	Human
Source:	HEK-293 Cells
Protein Type:	Recombinant
Purification tag / Conjugate:	This DCPS protein is labelled with Myc-DYKDDDDK Tag.
Application:	Antibody Production (AbP), Standard (STD)

Product Details

Characteristics:	<ul style="list-style-type: none">• Recombinant human DCPS protein expressed in HEK293 cells.• Produced with end-sequenced ORF clone
Purity:	> 80 % as determined by SDS-PAGE and Coomassie blue staining

Target Details

Target:	DCPS
Alternative Name:	Dcps (DCPS Products)
Background:	<p>This gene encodes a member of the histidine triad family of pyrophosphatases that removes short mRNA fragments containing the 5' mRNA cap structure, which appear in the 3' → 5' <i>mRNA decay pathway, following deadenylation and exosome-mediated turnover. This enzyme hydrolyzes the triphosphate linkage of the cap structure (7-methylguanosine nucleoside triphosphate) to yield 7-methylguanosine monophosphate and nucleoside</i></p>

Target Details

diphosphate. It protects the cell from the potentially toxic accumulation of these short, capped mRNA fragments, and regulates the activity of other cap-binding proteins, which are inhibited by their accumulation. It also acts as a transcript-specific modulator of pre-mRNA splicing and microRNA turnover.

Molecular Weight: 38.4 kDa

NCBI Accession: [NP_054745](#)

Application Details

Application Notes: Recombinant human proteins can be used for:
Native antigens for optimized antibody production
Positive controls in ELISA and other antibody assays

Comment: The tag is located at the C-terminal.

Restrictions: For Research Use only

Handling

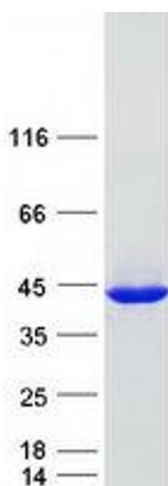
Concentration: 50 µg/mL

Buffer: 25 mM Tris.HCl, pH 7.3, 100 mM glycine, 10 % glycerol.

Storage: -80 °C

Storage Comment: Store at -80°C. Thaw on ice, aliquot to individual single-use tubes, and then re-freeze immediately. Only 2-3 freeze thaw cycles are recommended.

Images



Western Blotting

Image 1. Validation with Western Blot