

Datasheet for ABIN2719465

**DEAH (Asp-Glu-Ala-His) Box Polypeptide 40 (DHX40) protein
(Myc-DYKDDDDK Tag)**[Go to Product page](#)

1 Image

Overview

| | |
|-------------------------------|---|
| Quantity: | 20 µg |
| Target: | DEAH (Asp-Glu-Ala-His) Box Polypeptide 40 (DHX40) |
| Origin: | Human |
| Source: | HEK-293 Cells |
| Protein Type: | Recombinant |
| Purification tag / Conjugate: | Myc-DYKDDDDK Tag |
| Application: | Antibody Production (AbP), Standard (STD) |

Product Details

| | |
|------------------|--|
| Characteristics: | <ul style="list-style-type: none">• Recombinant human DHX40 protein expressed in HEK293 cells.• Produced with end-sequenced ORF clone |
| Purity: | > 80 % as determined by SDS-PAGE and Coomassie blue staining |

Target Details

| | |
|-------------------|---|
| Target: | DEAH (Asp-Glu-Ala-His) Box Polypeptide 40 (DHX40) |
| Alternative Name: | Dhx40 (DHX40 Products) |
| Background: | This gene encodes a member of the DExH/D box family of ATP-dependent RNA helicases that have an essential role in RNA metabolism. Alternate splicing results in multiple transcript variants. A pseudogene of this gene is found on chromosome 17.[provided by RefSeq, Oct 2009]. |
| Molecular Weight: | 88.4 kDa |

Target Details

NCBI Accession: [NP_078888](#)

Application Details

Application Notes: Recombinant human proteins can be used for:
Native antigens for optimized antibody production
Positive controls in ELISA and other antibody assays

Comment: The tag is located at the C-terminal.

Restrictions: For Research Use only

Handling

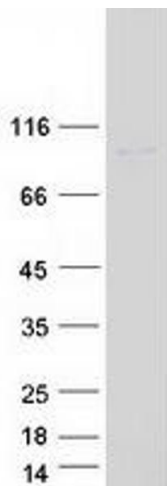
Concentration: 50 µg/mL

Buffer: 25 mM Tris.HCl, pH 7.3, 100 mM glycine, 10 % glycerol.

Storage: -80 °C

Storage Comment: Store at -80°C. Thaw on ice, aliquot to individual single-use tubes, and then re-freeze immediately. Only 2-3 freeze thaw cycles are recommended.

Images



Western Blotting

Image 1. Validation with Western Blot