

Datasheet for ABIN271986
anti-Actin antibody (pan)



[Go to Product page](#)

2 Images

Overview

Quantity:	0.1 mg
Target:	Actin
Binding Specificity:	pan
Reactivity:	Human, Rat, Mouse
Host:	Rabbit
Clonality:	Polyclonal
Conjugate:	This Actin antibody is un-conjugated
Application:	Western Blotting (WB), Immunohistochemistry (Paraffin-embedded Sections) (IHC (p)), Immunofluorescence (IF)

Product Details

Specificity:	This antibody detects endogenous levels of Actin-pan ($\alpha/\beta/\gamma$) protein (region surrounding Gln49)
Cross-Reactivity (Details):	Species reactivity (expected): Mouse and Rat Species reactivity (tested): Human.
Purification:	Affinity-chromatography
Purity:	> 95 % (by SDS-PAGE)

Target Details

Target:	Actin
Abstract:	Actin Products

Target Details

Background: Beta actin is one of six different actin isoforms which have been identified. Actins are highly conserved proteins that are involved in cell motility, structure and integrity. Be aware when using beta actin antibodies as loading controls that although beta actin is normally the best protein to use as a loading control, under some conditions its amounts can vary between samples. In particular, expression of actin in adipose tissue is very low (Spiegelman and Farmer, Cell, 1982, 29(1):53-60) "in cells undergoing adipose differentiation actin synthesis decreases by 90 %".

Molecular Weight: approx. 45 kDa

Application Details

Application Notes: ELISA: 1: 10000 approx. 1: 20000. WB: 1: 500 approx. 1: 1000. IHC: 1: 50 approx. 1: 200. IF: 1: 50 approx. 1: 200.
Other applications not tested.
Optimal dilutions are dependent on conditions and should be determined by the user.

Restrictions: For Research Use only

Handling

Concentration: 1,0 mg/mL

Buffer: PBS, pH 7.2, 0.05 % sodium azide

Preservative: Sodium azide

Precaution of Use: This product contains sodium azide: a POISONOUS AND HAZARDOUS SUBSTANCE which should be handled by trained staff only.

Handling Advice: Avoid repeated freezing and thawing.

Storage: 4 °C/-20 °C

Storage Comment: Store the antibody undiluted at 2-8 °C for one month or (in aliquots) at -20 °C for longer.

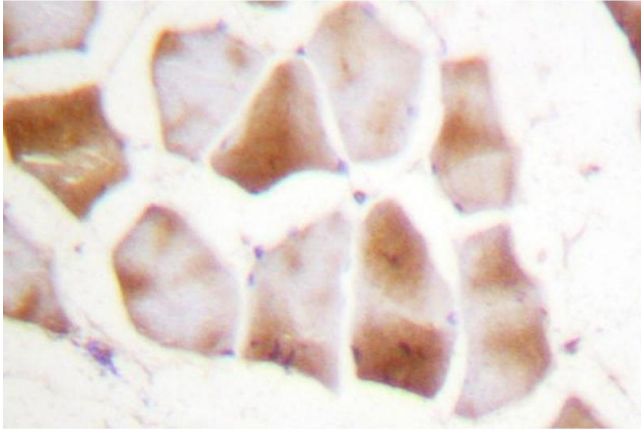


Image 1.

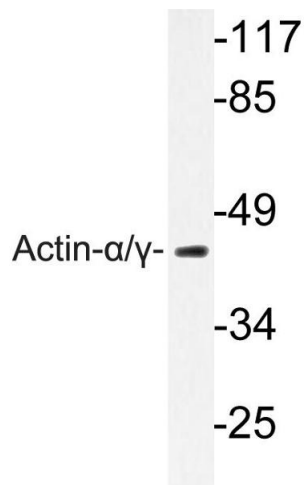


Image 2.