

Datasheet for ABIN2719894

**E2F1 Protein (Myc-DYKDDDDK Tag)**[1 Image](#)[1 Publication](#)[Go to Product page](#)

## Overview

Quantity:	20 µg
Target:	E2F1
Origin:	Human
Source:	HEK-293 Cells
Protein Type:	Recombinant
Purification tag / Conjugate:	This E2F1 protein is labelled with Myc-DYKDDDDK Tag.
Application:	Antibody Production (AbP), Standard (STD)

## Product Details

Characteristics:	<ul style="list-style-type: none"><li>• Recombinant human E2F1 protein expressed in HEK293 cells.</li><li>• Produced with end-sequenced ORF clone</li></ul>
Purity:	> 80 % as determined by SDS-PAGE and Coomassie blue staining

## Target Details

Target:	E2F1
Alternative Name:	e2f1 ( <a href="#">E2F1 Products</a> )
Background:	The protein encoded by this gene is a member of the E2F family of transcription factors. The E2F family plays a crucial role in the control of cell cycle and action of tumor suppressor proteins and is also a target of the transforming proteins of small DNA tumor viruses. The E2F proteins contain several evolutionally conserved domains found in most members of the family. These domains include a DNA binding domain, a dimerization domain which determines

## Target Details

interaction with the differentiation regulated transcription factor proteins (DP), a transactivation domain enriched in acidic amino acids, and a tumor suppressor protein association domain which is embedded within the transactivation domain. This protein and another 2 members, E2F2 and E2F3, have an additional cyclin binding domain. This protein binds preferentially to retinoblastoma protein pRB in a cell-cycle dependent manner. It can mediate both cell proliferation and p53-dependent/independent apoptosis.

Molecular Weight: 46.7 kDa

NCBI Accession: [NP\\_005216](#)

Pathways: [p53 Signaling](#), [Cell Division Cycle](#), [Mitotic G1-G1/S Phases](#), [DNA Replication](#), [M Phase](#), [Autophagy](#)

## Application Details

Application Notes: Recombinant human proteins can be used for:  
Native antigens for optimized antibody production  
Positive controls in ELISA and other antibody assays

Comment: The tag is located at the C-terminal.

Restrictions: For Research Use only

## Handling

Concentration: 50 µg/mL

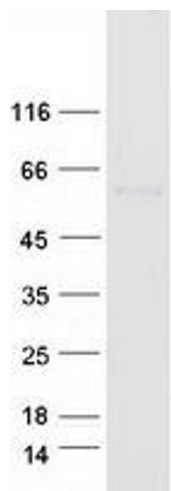
Buffer: 25 mM Tris.HCl, pH 7.3, 100 mM glycine, 10 % glycerol.

Storage: -80 °C

Storage Comment: Store at -80°C. Thaw on ice, aliquot to individual single-use tubes, and then re-freeze immediately. Only 2-3 freeze thaw cycles are recommended.

## Publications

Product cited in: Ramdzan, Polling, Chia, Ng, Ormsby, Croft, Purcell, Bogoyevitch, Ng, Gleeson, Hatters: "Tracking protein aggregation and mislocalization in cells with flow cytometry." in: **Nature methods**, Vol. 9, Issue 5, pp. 467-70, (2012) ([PubMed](#)).



Western Blotting

**Image 1.** Validation with Western Blot