

Datasheet for ABIN2719904

RCAS1 Protein (Transcript Variant 1) (Myc-DYKDDDDK Tag)[Go to Product page](#)**1** Image

Overview

| | |
|-------------------------------|---|
| Quantity: | 20 µg |
| Target: | RCAS1 (EBAG9) |
| Protein Characteristics: | Transcript Variant 1 |
| Origin: | Human |
| Source: | HEK-293 Cells |
| Protein Type: | Recombinant |
| Purification tag / Conjugate: | This RCAS1 protein is labelled with Myc-DYKDDDDK Tag. |
| Application: | Antibody Production (AbP), Standard (STD) |

Product Details

| | |
|------------------|---|
| Characteristics: | <ul style="list-style-type: none">• Recombinant human EBAG9 / RCAS1 (transcript variant 1) protein expressed in HEK293 cells.• Produced with end-sequenced ORF clone |
| Purity: | > 80 % as determined by SDS-PAGE and Coomassie blue staining |

Target Details

| | |
|-------------------|---|
| Target: | RCAS1 (EBAG9) |
| Alternative Name: | Ebag9,rcas1 (EBAG9 Products) |
| Background: | This gene was identified as an estrogen-responsive gene. Regulation of transcription by estrogen is mediated by estrogen receptor, which binds to the estrogen-responsive element found in the 5'-flanking region of this gene. The encoded protein is a tumor-associated antigen |

Target Details

that is expressed at high frequency in a variety of cancers. Alternate splicing results in multiple transcript variants. A pseudogene of this gene has been defined on chromosome 10.

Molecular Weight: 24.2 kDa

NCBI Accession: [NP_004206](#)

Application Details

Application Notes: Recombinant human proteins can be used for:
Native antigens for optimized antibody production
Positive controls in ELISA and other antibody assays

Comment: The tag is located at the C-terminal.

Restrictions: For Research Use only

Handling

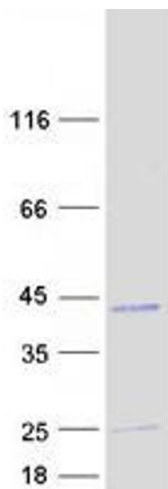
Concentration: 50 µg/mL

Buffer: 25 mM Tris.HCl, pH 7.3, 100 mM glycine, 10 % glycerol.

Storage: -80 °C

Storage Comment: Store at -80°C. Thaw on ice, aliquot to individual single-use tubes, and then re-freeze immediately. Only 2-3 freeze thaw cycles are recommended.

Images



Western Blotting

Image 1. Validation with Western Blot