

Datasheet for ABIN2720156

**anti-EMG1 antibody**

3 Images

[Go to Product page](#)

## Overview

Quantity:	0.1 mL
Target:	EMG1
Reactivity:	Human, Dog, Monkey
Host:	Mouse
Clonality:	Monoclonal
Application:	Western Blotting (WB), Flow Cytometry (FACS), Immunofluorescence (IF)

## Product Details

Immunogen:	Full length human recombinant protein of human EMG1(NP_006322) produced in HEK293T cell.
Clone:	1B8
Isotype:	IgG2b
Purification:	Purified from mouse ascites fluids by affinity chromatography

## Target Details

Target:	EMG1
Alternative Name:	EMG1 ( <a href="#">EMG1 Products</a> )
Molecular Weight:	26.5 kDa
Gene ID:	10436
NCBI Accession:	<a href="#">NM_006331</a>

## Target Details

HGNC: 10436

## Application Details

Application Notes: WB 1:1000~2000, IF 1:100, FLOW 1:100

Comment: The concentration of the product may vary between different lots.

Restrictions: For Research Use only

## Handling

Format: Liquid

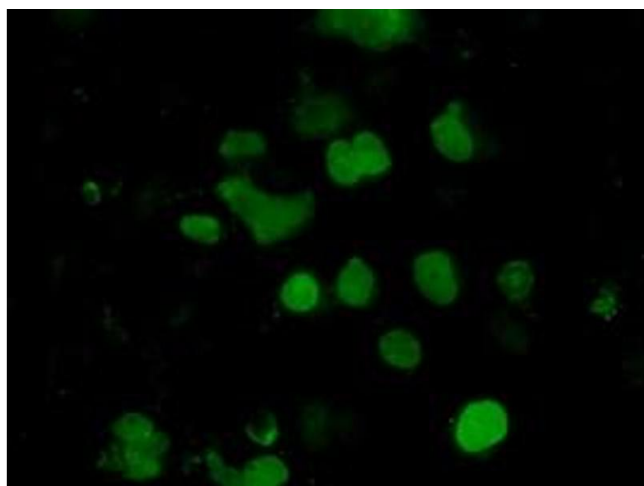
Concentration: 0.5-1.0 mg/mL

Buffer: PBS ( pH 7.3) containing 1 % BSA, 50 % glycerol and 0.02 % sodium azide.

Preservative: Sodium azide

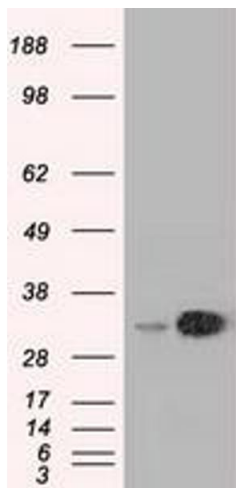
Precaution of Use: This product contains sodium azide: a POISONOUS AND HAZARDOUS SUBSTANCE which should be handled by trained staff only.

## Images



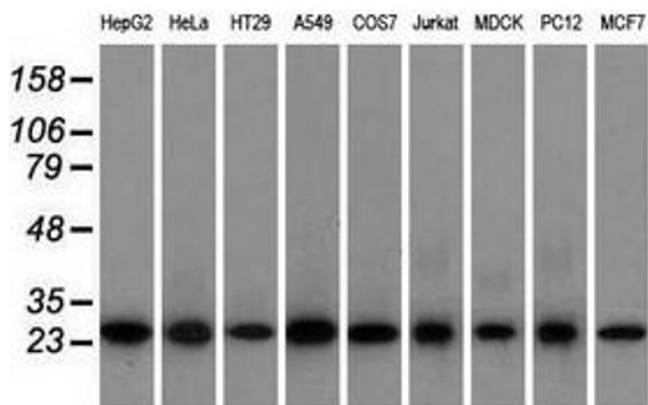
### Immunofluorescence

**Image 1.** Anti-EMG1 mouse monoclonal antibody (ABIN2452987) immunofluorescent staining of COS7 cells transiently transfected by pCMV6-ENTRY EMG1 (RC208885).



#### Western Blotting

**Image 2.** HEK293T cells were transfected with the pCMV6-ENTRY control (Left lane) or pCMV6-ENTRY EMG1 (Right lane) cDNA for 48 hrs and lysed. Equivalent amounts of cell lysates (5 µg per lane) were separated by SDS-PAGE and immunoblotted with anti-EMG1.



#### Western Blotting

**Image 3.** Western blot analysis of extracts (35 µg) from 9 different cell lines by using anti-EMG1 monoclonal antibody.