

Datasheet for ABIN2720181

Endothelin 1 Protein (EDN1) (Myc-DYKDDDDK Tag)[Go to Product page](#)**1** Image

Overview

Quantity:	20 µg
Target:	Endothelin 1 (EDN1)
Origin:	Human
Source:	HEK-293 Cells
Protein Type:	Recombinant
Purification tag / Conjugate:	This Endothelin 1 protein is labelled with Myc-DYKDDDDK Tag.
Application:	Antibody Production (AbP), Standard (STD)

Product Details

Characteristics:	<ul style="list-style-type: none">• Recombinant human Endothelin-1 protein expressed in HEK293 cells.• Produced with end-sequenced ORF clone
Purity:	> 80 % as determined by SDS-PAGE and Coomassie blue staining

Target Details

Target:	Endothelin 1 (EDN1)
Alternative Name:	Endothelin-1 (EDN1 Products)
Background:	This gene encodes a preproprotein that is proteolytically processed to generate a secreted peptide that belongs to the endothelin/sarafotoxin family. This peptide is a potent vasoconstrictor and its cognate receptors are therapeutic targets in the treatment of pulmonary arterial hypertension. Aberrant expression of this gene may promote tumorigenesis. Alternative splicing results in multiple transcript variants.

Target Details

Molecular Weight:	22.4 kDa
NCBI Accession:	NP_001946
Pathways:	Hormone Transport , Negative Regulation of Hormone Secretion , Regulation of Systemic Arterial Blood Pressure by Hormones , cAMP Metabolic Process , Regulation of Muscle Cell Differentiation , Regulation of G-Protein Coupled Receptor Protein Signaling , Regulation of Cell Size

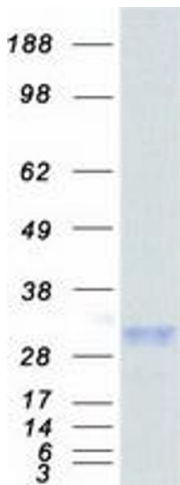
Application Details

Application Notes:	Recombinant human proteins can be used for: Native antigens for optimized antibody production Positive controls in ELISA and other antibody assays
Comment:	The tag is located at the C-terminal.
Restrictions:	For Research Use only

Handling

Concentration:	50 µg/mL
Buffer:	25 mM Tris.HCl, pH 7.3, 100 mM glycine, 10 % glycerol.
Storage:	-80 °C
Storage Comment:	Store at -80°C. Thaw on ice, aliquot to individual single-use tubes, and then re-freeze immediately. Only 2-3 freeze thaw cycles are recommended.

Images



Western Blotting

Image 1. Validation with Western Blot