

Datasheet for ABIN2720229

EPH Receptor A10 Protein (EPHA10) (DYKDDDDK-His Tag)[Go to Product page](#)**1** Image

Overview

Quantity:	20 µg
Target:	EPH Receptor A10 (EPHA10)
Origin:	Human
Source:	HEK-293 Cells
Protein Type:	Recombinant
Purification tag / Conjugate:	This EPH Receptor A10 protein is labelled with DYKDDDDK-His Tag.
Application:	Antibody Production (AbP), Standard (STD)

Product Details

Characteristics:	<ul style="list-style-type: none">• Recombinant human EPHA10 (C-term DDK/His tag, transcript variant 3) protein expressed in Human 293HEK cells.• Produced with end-sequenced ORF clone
Purity:	> 80 % as determined by SDS-PAGE and Coomassie blue staining

Target Details

Target:	EPH Receptor A10 (EPHA10)
Alternative Name:	Epha10 (EPHA10 Products)
Background:	Ephrin receptors, the largest subfamily of receptor tyrosine kinases (RTKs), and their ephrin ligands are important mediators of cell-cell communication regulating cell attachment, shape, and mobility in neuronal and epithelial cells (Aasheim et al., 2005 [PubMed 15777695]). See MIM 179610 for additional background on Eph receptors and ephrins.[supplied by OMIM, Mar

Target Details

	2008].
Molecular Weight:	60 kDa
NCBI Accession:	NP_001092909
Pathways:	RTK Signaling

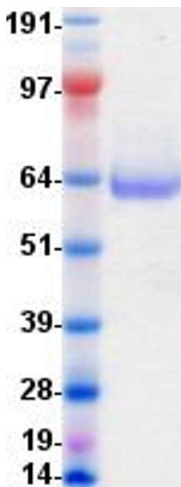
Application Details

Application Notes:	Recombinant human proteins can be used for: Native antigens for optimized antibody production Positive controls in ELISA and other antibody assays
Comment:	The tag is located at the C-terminal.
Restrictions:	For Research Use only

Handling

Concentration:	50 µg/mL
Buffer:	1 x PBS, pH 7.4, 10 % glycerol
Storage:	-80 °C
Storage Comment:	Store at -80°C. Thaw on ice, aliquot to individual single-use tubes, and then re-freeze immediately. Only 2-3 freeze thaw cycles are recommended.

Images



Western Blotting

Image 1. Validation with Western Blot