

Datasheet for ABIN2720237

**EPH Receptor A3 Protein (EPHA3) (DYKDDDDK Tag)**[Go to Product page](#)**1** Image

## Overview

Quantity:	20 µg
Target:	EPH Receptor A3 (EPHA3)
Origin:	Human
Source:	Insect cells (Sf9)
Protein Type:	Recombinant
Purification tag / Conjugate:	This EPH Receptor A3 protein is labelled with DYKDDDDK Tag.
Application:	Antibody Production (AbP), Standard (STD)

## Product Details

Characteristics:	<ul style="list-style-type: none"><li>• Recombinant human EPHA3 (C-term DDK tag, transcript variant 1) protein expressed in Sf9 cells.</li><li>• Produced with end-sequenced ORF clone</li></ul>
Purity:	> 80 % as determined by SDS-PAGE and Coomassie blue staining

## Target Details

Target:	EPH Receptor A3 (EPHA3)
Alternative Name:	Epha3 ( <a href="#">EPHA3 Products</a> )
Background:	This gene belongs to the ephrin receptor subfamily of the protein-tyrosine kinase family. EPH and EPH-related receptors have been implicated in mediating developmental events, particularly in the nervous system. Receptors in the EPH subfamily typically have a single kinase domain and an extracellular region containing a Cys-rich domain and 2 fibronectin type

## Target Details

---

III repeats. The ephrin receptors are divided into 2 groups based on the similarity of their extracellular domain sequences and their affinities for binding ephrin-A and ephrin-B ligands. This gene encodes a protein that binds ephrin-A ligands. Two alternatively spliced transcript variants have been described for this gene.

Molecular Weight: 58.8 kDa

NCBI Accession: [NP\\_005224](#)

Pathways: [RTK Signaling, Regulation of Cell Size](#)

## Application Details

---

Application Notes: Recombinant human proteins can be used for:  
Native antigens for optimized antibody production  
Positive controls in ELISA and other antibody assays

Comment: The tag is located at the C-terminal.

Restrictions: For Research Use only

## Handling

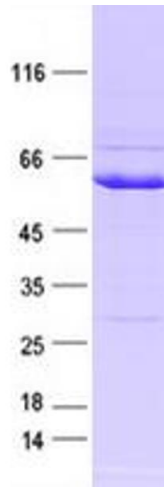
---

Concentration: 50 µg/mL

Buffer: 50 mM Tris-HCl, pH 8.0, 100 mM glycine, 10 % glycerol. Store at -80C. Avoid repeated freeze-thaw cycles. Stable for at least 3 months from receipt of products under proper storage and handling conditions.

Storage: -80 °C

Storage Comment: Store at -80°C. Thaw on ice, aliquot to individual single-use tubes, and then re-freeze immediately. Only 2-3 freeze thaw cycles are recommended.



### Western Blotting

**Image 1.** Validation with Western Blot