

Datasheet for ABIN2720245

**EPH Receptor B1 Protein (EPHB1) (DYKDDDDK-His Tag)**[Go to Product page](#)**1** Image

## Overview

Quantity:	20 µg
Target:	EPH Receptor B1 (EPHB1)
Origin:	Human
Source:	HEK-293 Cells
Protein Type:	Recombinant
Purification tag / Conjugate:	This EPH Receptor B1 protein is labelled with DYKDDDDK-His Tag.
Application:	Antibody Production (AbP), Standard (STD)

## Product Details

Characteristics:	<ul style="list-style-type: none"><li>• Recombinant human EPHB1 (C-term DDK/His tag) protein expressed in Human 293HEK cells.</li><li>• Produced with end-sequenced ORF clone</li></ul>
------------------	---

Purity:	> 80 % as determined by SDS-PAGE and Coomassie blue staining
---------	--

## Target Details

Target:	EPH Receptor B1 (EPHB1)
Alternative Name:	Ephb1 ( <a href="#">EPHB1 Products</a> )
Background:	Ephrin receptors and their ligands, the ephrins, mediate numerous developmental processes, particularly in the nervous system. Based on their structures and sequence relationships, ephrins are divided into the ephrin-A (EFNA) class, which are anchored to the membrane by a glycosylphosphatidylinositol linkage, and the ephrin-B (EFNB) class, which are transmembrane

## Target Details

---

proteins. The Eph family of receptors are divided into 2 groups based on the similarity of their extracellular domain sequences and their affinities for binding ephrin-A and ephrin-B ligands. Ephrin receptors make up the largest subgroup of the receptor tyrosine kinase (RTK) family. The protein encoded by this gene is a receptor for ephrin-B family members.

---

Molecular Weight: 61 kDa

---

NCBI Accession: [NP\\_004432](#)

---

Pathways: [RTK Signaling](#)

## Application Details

---

Application Notes: Recombinant human proteins can be used for:  
Native antigens for optimized antibody production  
Positive controls in ELISA and other antibody assays

---

Comment: The tag is located at the C-terminal.

---

Restrictions: For Research Use only

## Handling

---

Concentration: 50 µg/mL

---

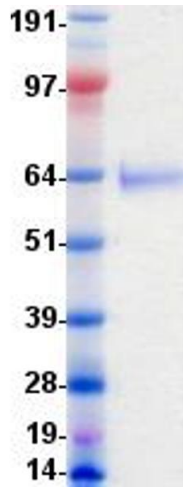
Buffer: 1 x PBS, pH 7.4, 10 % glycerol

---

Storage: -80 °C

---

Storage Comment: Store at -80°C. Thaw on ice, aliquot to individual single-use tubes, and then re-freeze immediately. Only 2-3 freeze thaw cycles are recommended.



### Western Blotting

**Image 1.** Validation with Western Blot