



[Go to Product page](#)

Datasheet for ABIN2720246

EPH Receptor B1 Protein (EPHB1) (DYKDDDDK Tag)

1 Image

Overview

Quantity:	20 µg
Target:	EPH Receptor B1 (EPHB1)
Origin:	Human
Source:	Insect cells (Sf9)
Protein Type:	Recombinant
Purification tag / Conjugate:	This EPH Receptor B1 protein is labelled with DYKDDDDK Tag.
Application:	Antibody Production (AbP), Standard (STD)

Product Details

- Characteristics:
- Recombinant human EPHB1 (C-term DDK tag) protein expressed in Sf9 cells.
 - Produced with end-sequenced ORF clone

Purity: > 80 % as determined by SDS-PAGE and Coomassie blue staining

Target Details

Target: EPH Receptor B1 (EPHB1)

Alternative Name: Ephb1 ([EPHB1 Products](#))

Background: Ephrin receptors and their ligands, the ephrins, mediate numerous developmental processes, particularly in the nervous system. Based on their structures and sequence relationships, ephrins are divided into the ephrin-A (EFNA) class, which are anchored to the membrane by a glycosylphosphatidylinositol linkage, and the ephrin-B (EFNB) class, which are transmembrane proteins. The Eph family of receptors are divided into 2 groups based on the similarity of their

Target Details

extracellular domain sequences and their affinities for binding ephrin-A and ephrin-B ligands. Ephrin receptors make up the largest subgroup of the receptor tyrosine kinase (RTK) family. The protein encoded by this gene is a receptor for ephrin-B family members.

Molecular Weight: 60.2 kDa

NCBI Accession: [NP_004432](#)

Pathways: [RTK Signaling](#)

Application Details

Application Notes: Recombinant human proteins can be used for:
Native antigens for optimized antibody production
Positive controls in ELISA and other antibody assays

Comment: The tag is located at the C-terminal.

Restrictions: For Research Use only

Handling

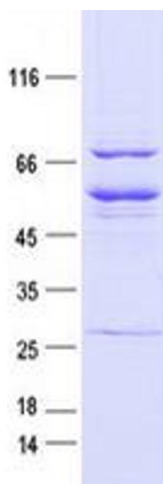
Concentration: 50 µg/mL

Buffer: 50 mM Tris-HCl, pH 8.0, 100 mM glycine, 10 % glycerol.

Storage: -80 °C

Storage Comment: Store at -80°C. Thaw on ice, aliquot to individual single-use tubes, and then re-freeze immediately. Only 2-3 freeze thaw cycles are recommended.

Images



Western Blotting

Image 1. Validation with Western Blot