

Datasheet for ABIN2720255

EPH Receptor B6 Protein (EPHB6) (DYKDDDDK-His Tag)[Go to Product page](#)**1** Image

Overview

Quantity:	20 µg
Target:	EPH Receptor B6 (EPHB6)
Origin:	Human
Source:	HEK-293 Cells
Protein Type:	Recombinant
Purification tag / Conjugate:	This EPH Receptor B6 protein is labelled with DYKDDDDK-His Tag.
Application:	Antibody Production (AbP), Standard (STD)

Product Details

Characteristics:	<ul style="list-style-type: none">• Recombinant human EPHB6 (C-term DDK/His tag) protein expressed in Human 293HEK cells.• Produced with end-sequenced ORF clone
Purity:	> 80 % as determined by SDS-PAGE and Coomassie blue staining

Target Details

Target:	EPH Receptor B6 (EPHB6)
Alternative Name:	Ephb6 (EPHB6 Products)
Background:	This gene encodes a member of a family of transmembrane proteins that function as receptors for ephrin-B family proteins. Unlike other members of this family, the encoded protein does not contain a functional kinase domain. Activity of this protein can influence cell adhesion and migration. Expression of this gene is downregulated during tumor progression, suggesting that

Target Details

	the protein may suppress tumor invasion and metastasis. Alternative splicing results in multiple transcript variants.
Molecular Weight:	63 kDa
NCBI Accession:	NP_004436
Pathways:	RTK Signaling , Hormone Transport

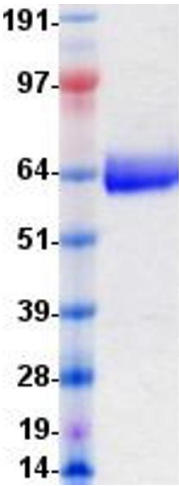
Application Details

Application Notes:	Recombinant human proteins can be used for: Native antigens for optimized antibody production Positive controls in ELISA and other antibody assays
Comment:	The tag is located at the C-terminal.
Restrictions:	For Research Use only

Handling

Concentration:	50 µg/mL
Buffer:	1 x PBS, pH 7.4, 10 % glycerol.
Storage:	-80 °C
Storage Comment:	Store at -80°C. Thaw on ice, aliquot to individual single-use tubes, and then re-freeze immediately. Only 2-3 freeze thaw cycles are recommended.

Images



Western Blotting

Image 1. Validation with Western Blot