

Datasheet for ABIN2720298
anti-EPM2AIP1 antibody[Go to Product page](#)

3 Images

Overview

Quantity:	0.1 mL
Target:	EPM2AIP1
Reactivity:	Human, Rat
Host:	Mouse
Clonality:	Monoclonal
Application:	Western Blotting (WB), Flow Cytometry (FACS), Immunofluorescence (IF)

Product Details

Immunogen:	Full length human recombinant protein of human EPM2AIP1 (NP_055620) produced in HEK293T cell.
Clone:	5G8
Isotype:	IgG2a
Purification:	Purified from mouse ascites fluids by affinity chromatography

Target Details

Target:	EPM2AIP1
Alternative Name:	EPM2AIP1 (EPM2AIP1 Products)
Molecular Weight:	70.2 kDa
Gene ID:	9852
NCBI Accession:	NM_014805

Target Details

HGNC: 9852

Application Details

Application Notes: WB 1:500~2000, IF 1:100, FLOW 1:100

Comment: The concentration of the product may vary between different lots.

Restrictions: For Research Use only

Handling

Format: Liquid

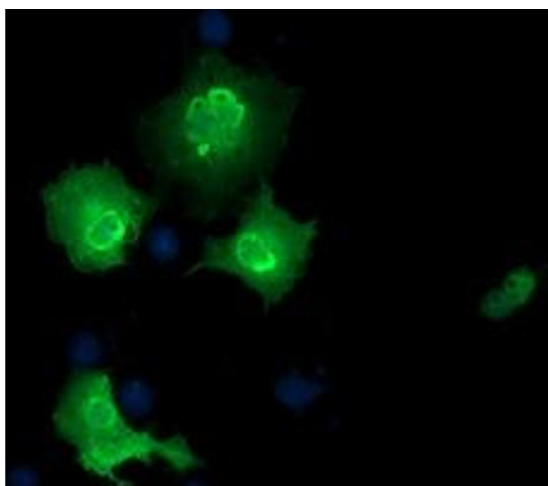
Concentration: 0.5-1.0 mg/mL

Buffer: PBS (PH 7.3) containing 1 % BSA, 50 % glycerol and 0.02 % sodium azide.

Preservative: Sodium azide

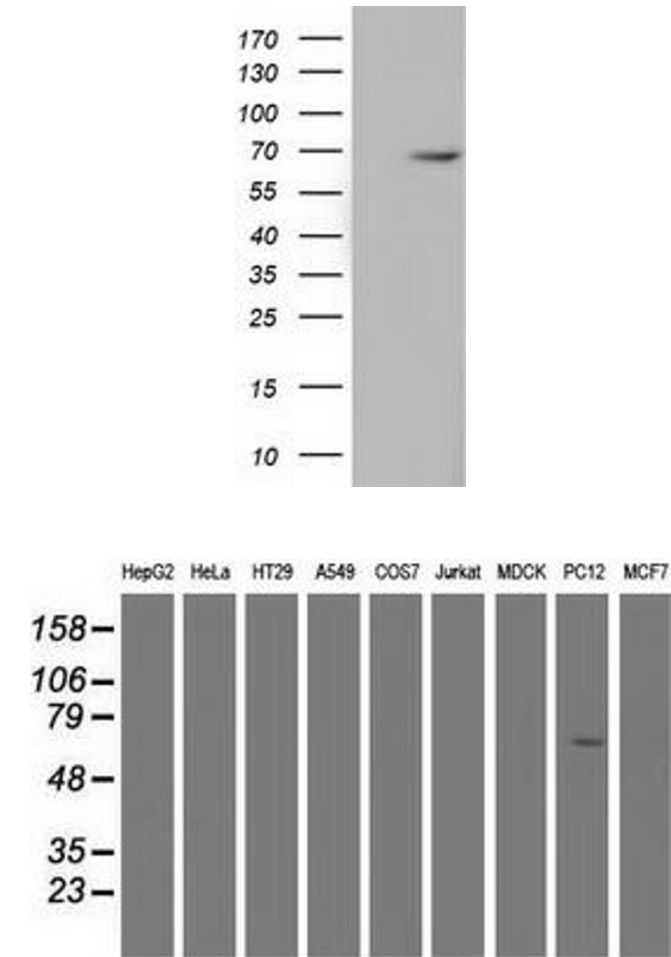
Precaution of Use: This product contains sodium azide: a POISONOUS AND HAZARDOUS SUBSTANCE which should be handled by trained staff only.

Images



Immunofluorescence

Image 1. Anti-EPM2AIP1 mouse monoclonal antibody (ABIN2452993) immunofluorescent staining of COS7 cells transiently transfected by pCMV6-ENTRY EPM2AIP1 (RC209239).



Western Blotting

Image 2. HEK293T cells were transfected with the pCMV6-ENTRY control (Left lane) or pCMV6-ENTRY EPM2AIP1 (Right lane) cDNA for 48 hrs and lysed. Equivalent amounts of cell lysates (5 µg per lane) were separated by SDS-PAGE and immunoblotted with anti-EPM2AIP1.

Western Blotting

Image 3. Western blot analysis of extracts (35 µg) from 9 different cell lines by using anti-EPM2AIP1 monoclonal antibody.