

Datasheet for ABIN2720324

**EPHX1 Protein (Transcript Variant 2) (Myc-DYKDDDDK Tag)**[Go to Product page](#)**1** Image

## Overview

Quantity:	20 µg
Target:	EPHX1
Protein Characteristics:	Transcript Variant 2
Origin:	Human
Source:	HEK-293 Cells
Protein Type:	Recombinant
Purification tag / Conjugate:	This EPHX1 protein is labelled with Myc-DYKDDDDK Tag.
Application:	Antibody Production (AbP), Standard (STD)

## Product Details

Characteristics:	<ul style="list-style-type: none"><li>• Recombinant human Epoxide hydrolase 1 / EPHX1 (transcript variant 2) protein expressed in HEK293 cells.</li><li>• Produced with end-sequenced ORF clone</li></ul>
Purity:	> 80 % as determined by SDS-PAGE and Coomassie blue staining

## Target Details

Target:	EPHX1
Alternative Name:	Epoxide Hydrolase 1, ephx1 ( <a href="#">EPHX1 Products</a> )
Background:	Epoxide hydrolase is a critical biotransformation enzyme that converts epoxides from the degradation of aromatic compounds to trans-dihydrodiols which can be conjugated and excreted from the body. Epoxide hydrolase functions in both the activation and detoxification of

## Target Details

epoxides. Mutations in this gene cause preeclampsia, epoxide hydrolase deficiency or increased epoxide hydrolase activity. Alternatively spliced transcript variants encoding the same protein have been found for this gene.[provided by RefSeq, Dec 2008].

Molecular Weight:	52.8 kDa
NCBI Accession:	<a href="#">NP_001129490</a>

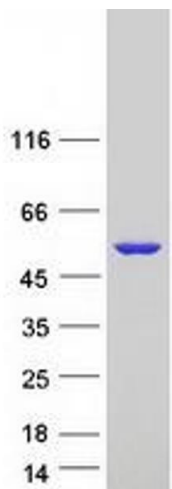
## Application Details

Application Notes:	Recombinant human proteins can be used for: Native antigens for optimized antibody production Positive controls in ELISA and other antibody assays
Comment:	The tag is located at the C-terminal.
Restrictions:	For Research Use only

## Handling

Concentration:	50 µg/mL
Buffer:	25 mM Tris.HCl, pH 7.3, 100 mM glycine, 10 % glycerol.
Storage:	-80 °C
Storage Comment:	Store at -80°C. Thaw on ice, aliquot to individual single-use tubes, and then re-freeze immediately. Only 2-3 freeze thaw cycles are recommended.

## Images



### Western Blotting

**Image 1.** Validation with Western Blot