

Datasheet for ABIN2720342

**EPS8-Like 1 Protein (EPS8L1) (Transcript Variant 1) (Myc-DYKDDDDK Tag)**[Go to Product page](#)**1** Image

## Overview

Quantity:	20 µg
Target:	EPS8-Like 1 (EPS8L1)
Protein Characteristics:	Transcript Variant 1
Origin:	Human
Source:	HEK-293 Cells
Protein Type:	Recombinant
Purification tag / Conjugate:	This EPS8-Like 1 protein is labelled with Myc-DYKDDDDK Tag.
Application:	Antibody Production (AbP), Standard (STD)

## Product Details

Characteristics:	<ul style="list-style-type: none"><li>• Recombinant human EPS8L1 (transcript variant 1) protein expressed in HEK293 cells.</li><li>• Produced with end-sequenced ORF clone</li></ul>
Purity:	> 80 % as determined by SDS-PAGE and Coomassie blue staining

## Target Details

Target:	EPS8-Like 1 (EPS8L1)
Alternative Name:	Eps8l1 ( <a href="#">EPS8L1 Products</a> )
Background:	This gene encodes a protein that is related to epidermal growth factor receptor pathway substrate 8 (EPS8), a substrate for the epidermal growth factor receptor. The function of this protein is unknown. At least two alternatively spliced transcript variants encoding different isoforms have been found for this gene.

## Target Details

Molecular Weight:	80.1 kDa
NCBI Accession:	<a href="#">NP_573441</a>

## Application Details

Application Notes:	Recombinant human proteins can be used for: Native antigens for optimized antibody production Positive controls in ELISA and other antibody assays
--------------------	--

Comment:	The tag is located at the C-terminal.
----------	---------------------------------------

Restrictions:	For Research Use only
---------------	-----------------------

## Handling

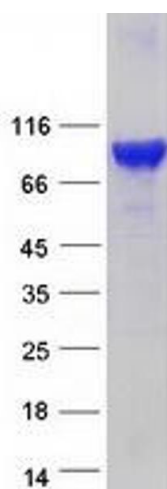
Concentration:	50 µg/mL
----------------	----------

Buffer:	25 mM Tris.HCl, pH 7.3, 100 mM glycine, 10 % glycerol.
---------	--

Storage:	-80 °C
----------	--------

Storage Comment:	Store at -80°C. Thaw on ice, aliquot to individual single-use tubes, and then re-freeze immediately. Only 2-3 freeze thaw cycles are recommended.
------------------	---

## Images



### Western Blotting

**Image 1.** Validation with Western Blot