

Datasheet for ABIN2720344

EPS8-Like 3 Protein (EPS8L3) (Transcript Variant 3) (Myc-DYKDDDDK Tag)[Go to Product page](#)**1** Image

Overview

Quantity:	20 µg
Target:	EPS8-Like 3 (EPS8L3)
Protein Characteristics:	Transcript Variant 3
Origin:	Human
Source:	HEK-293 Cells
Protein Type:	Recombinant
Purification tag / Conjugate:	This EPS8-Like 3 protein is labelled with Myc-DYKDDDDK Tag.
Application:	Antibody Production (AbP), Standard (STD)

Product Details

Characteristics:	<ul style="list-style-type: none">• Recombinant human EPS8L3 (transcript variant 3) protein expressed in HEK293 cells.• Produced with end-sequenced ORF clone
Purity:	> 80 % as determined by SDS-PAGE and Coomassie blue staining

Target Details

Target:	EPS8-Like 3 (EPS8L3)
Alternative Name:	Eps8l3 (EPS8L3 Products)
Background:	This gene encodes a protein that is related to epidermal growth factor receptor pathway substrate 8 (EPS8), a substrate for the epidermal growth factor receptor. The function of this protein is unknown. Alternatively spliced transcript variants encoding different isoforms exist.

Target Details

Molecular Weight:	63.3 kDa
NCBI Accession:	NP_078802

Application Details

Application Notes:	Recombinant human proteins can be used for: Native antigens for optimized antibody production Positive controls in ELISA and other antibody assays
--------------------	--

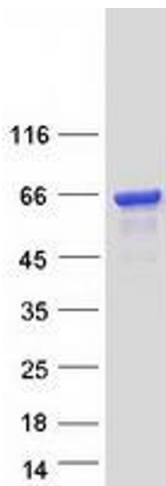
Comment:	The tag is located at the C-terminal.
----------	---------------------------------------

Restrictions:	For Research Use only
---------------	-----------------------

Handling

Concentration:	50 µg/mL
Buffer:	25 mM Tris.HCl, pH 7.3, 100 mM glycine, 10 % glycerol.
Storage:	-80 °C
Storage Comment:	Store at -80°C. Thaw on ice, aliquot to individual single-use tubes, and then re-freeze immediately. Only 2-3 freeze thaw cycles are recommended.

Images



Western Blotting

Image 1. Validation with Western Blot