

Datasheet for ABIN2720345

## Epsin 1 Protein (EPN1) (Transcript Variant 3) (Myc-DYKDDDDK Tag)



[Go to Product page](#)

### 1 Image

#### Overview

Quantity:	20 µg
Target:	Epsin 1 (EPN1)
Protein Characteristics:	Transcript Variant 3
Origin:	Human
Source:	HEK-293 Cells
Protein Type:	Recombinant
Purification tag / Conjugate:	This Epsin 1 protein is labelled with Myc-DYKDDDDK Tag.
Application:	Antibody Production (AbP), Standard (STD)

#### Product Details

Characteristics:	<ul style="list-style-type: none"><li>• Recombinant human Epsin-1 (transcript variant 3) protein expressed in HEK293 cells.</li><li>• Produced with end-sequenced ORF clone</li></ul>
Purity:	> 80 % as determined by SDS-PAGE and Coomassie blue staining

#### Target Details

Target:	Epsin 1 (EPN1)
Alternative Name:	Epsin-1 ( <a href="#">EPN1 Products</a> )
Background:	This gene encodes a member of the epsin protein family. The encoded protein binds clathrin and is involved in the endocytosis of clathrin-coated vesicles. Loss of function of this gene is associated with reduced tumor growth and progression in certain cancer types.

## Target Details

Molecular Weight:	57.3 kDa
NCBI Accession:	<a href="#">NP_037465</a>
Pathways:	<a href="#">EGFR Signaling Pathway</a> , <a href="#">EGFR Downregulation</a>

## Application Details

Application Notes:	Recombinant human proteins can be used for: Native antigens for optimized antibody production Positive controls in ELISA and other antibody assays
--------------------	--

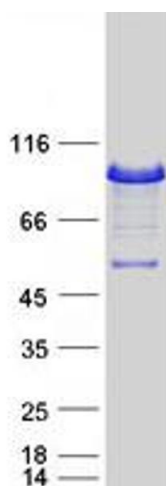
Comment: The tag is located at the C-terminal.

Restrictions: For Research Use only

## Handling

Concentration:	50 µg/mL
Buffer:	25 mM Tris.HCl, pH 7.3, 100 mM glycine, 10 % glycerol.
Storage:	-80 °C
Storage Comment:	Store at -80°C. Thaw on ice, aliquot to individual single-use tubes, and then re-freeze immediately. Only 2-3 freeze thaw cycles are recommended.

## Images



### Western Blotting

**Image 1.** Validation with Western Blot