

Datasheet for ABIN2720398

anti-ERCC1 antibody

3 Images

[Go to Product page](#)

Overview

Quantity:	0.1 mL
Target:	ERCC1
Reactivity:	Human, Dog, Monkey
Host:	Mouse
Clonality:	Monoclonal
Conjugate:	This ERCC1 antibody is un-conjugated
Application:	Western Blotting (WB), Immunofluorescence (IF), Flow Cytometry (FACS)

Product Details

Immunogen:	Full length human recombinant protein of human ERCC1 (NP_973730) produced in HEK293T cell.
Clone:	2A9
Isotype:	IgG2b
Purification:	Purified from mouse ascites fluids by affinity chromatography

Target Details

Target:	ERCC1
Alternative Name:	ERCC1 (ERCC1 Products)
Molecular Weight:	32.4 kDa
Gene ID:	2067

Target Details

NCBI Accession:	NM_001983
HGNC:	2067
Pathways:	DNA Damage Repair, Production of Molecular Mediator of Immune Response

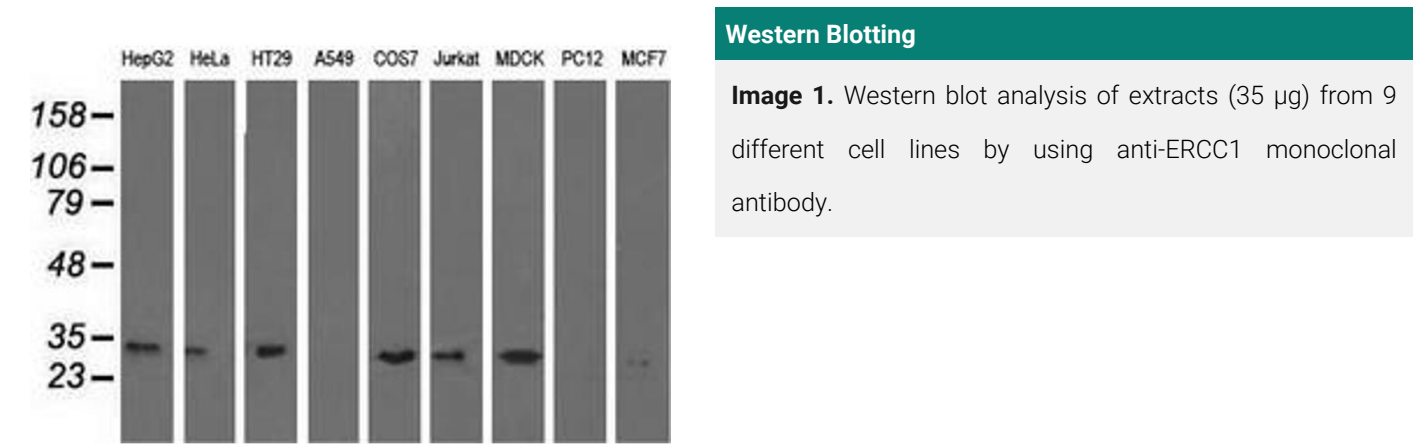
Application Details

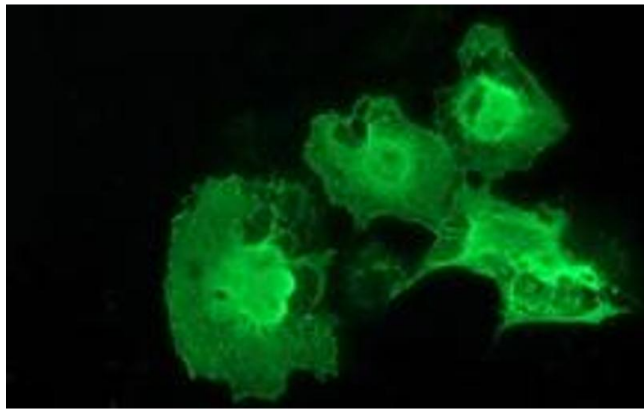
Application Notes:	WB 1:500~2000, IF 1:100, FLOW 1:100
Comment:	The concentration of the product may vary between diferrent lots.
Restrictions:	For Research Use only

Handling

Format:	Liquid
Concentration:	0.5-1.0 mg/mL
Buffer:	PBS (PH 7.3) containing 1 % BSA, 50 % glycerol and 0.02 % sodium azide.
Preservative:	Sodium azide
Precaution of Use:	This product contains sodium azide: a POISONOUS AND HAZARDOUS SUBSTANCE which should be handled by trained staff only.

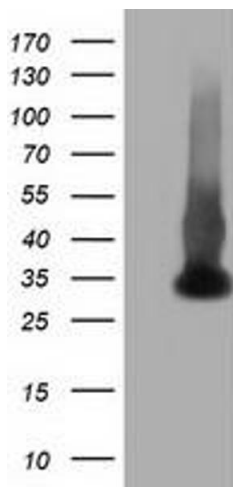
Images





Immunofluorescence

Image 2. Anti-ERCC1 mouse monoclonal antibody (ABIN2453004) immunofluorescent staining of COS7 cells transiently transfected by pCMV6-ENTRY ERCC1 (RC200478).



Western Blotting

Image 3. HEK293T cells were transfected with the pCMV6-ENTRY control (Left lane) or pCMV6-ENTRY ERCC1 (Right lane) cDNA for 48 hrs and lysed. Equivalent amounts of cell lysates (5 µg per lane) were separated by SDS-PAGE and immunoblotted with anti-ERCC1.