

Datasheet for ABIN2720516

**CCL27 Protein (Transcript Variant 2)****1** Image[Go to Product page](#)

## Overview

Quantity:	20 µg
Target:	CCL27
Protein Characteristics:	Transcript Variant 2
Origin:	Mouse
Source:	Escherichia coli (E. coli)
Protein Type:	Recombinant
Biological Activity:	Active
Application:	Functional Studies (Func), Antibody Production (AbP), Standard (STD), Protein Interaction (PI)

## Product Details

Specificity:	Optimal preservation of protein structure, post-translational modifications and functions.
Characteristics:	<ul style="list-style-type: none"><li>• Recombinant human ESkin / CCL27 (transcript variant 2) protein expressed in E. coli.</li><li>• Produced with end-sequenced ORF clone</li><li>• Tested for bioactivity.</li></ul>
Purity:	> 95 % as determined by SDS-PAGE and Coomassie blue staining
Endotoxin Level:	Endotoxin level is <0.1 ng/µg of protein (<1EU/µg).
Biological Activity Comment:	Determined by its ability to chemoattract human peripheral blood lymphocytes using a concentration range of 10.0-100.0 ng/ml.

## Target Details

Target:	CCL27
---------	-------

## Target Details

Alternative Name:	Eskine,ccl27 ( <a href="#">CCL27 Products</a> )
Molecular Weight:	10.9 kDa
NCBI Accession:	<a href="#">NP_001157518</a>

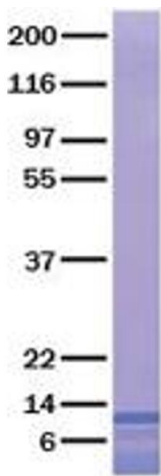
## Application Details

Application Notes:	Recombinant human proteins can be used for: Native antigens for optimized antibody production Positive controls in ELISA and other antibody assays Protein-protein interaction In vitro biochemical assays and cell-based functional assays
Restrictions:	For Research Use only

## Handling

Buffer:	Lyophilized from a 0.2 µM filtered solution of 20 mM phosphate buffer,100 mM NaCl, pH 7.2
Handling Advice:	Resuspend the protein in the desired concentration in proper buffer
Storage:	-80 °C
Storage Comment:	Store at -80°C. Thaw on ice, aliquot to individual single-use tubes, and then re-freeze immediately. Only 2-3 freeze thaw cycles are recommended.

## Images



**Western Blotting**

**Image 1.** Validation with Western Blot