

Datasheet for ABIN2720540

## Estrogen Receptor alpha Protein (Transcript Variant 1) (His tag)

[Go to Product page](#)

### 1 Image

#### Overview

Quantity:	10 µg
Target:	Estrogen Receptor alpha (ESR1)
Protein Characteristics:	Transcript Variant 1
Origin:	Human
Source:	Escherichia coli (E. coli)
Protein Type:	Recombinant
Purification tag / Conjugate:	This Estrogen Receptor alpha protein is labelled with His tag.
Application:	Antibody Production (AbP), Standard (STD)

#### Product Details

Characteristics:	<ul style="list-style-type: none"><li>• Recombinant human Estrogen receptor alpha (transcript variant 1) protein expressed in E. coli.</li><li>• Produced with end-sequenced ORF clone</li></ul>
Purity:	> 95 % as determined by SDS-PAGE and Coomassie blue staining
Endotoxin Level:	< 0.1 EU per µg protein as determined by LAL test

#### Target Details

Target:	Estrogen Receptor alpha (ESR1)
Alternative Name:	Estrogen Receptor alpha ( <a href="#">ESR1 Products</a> )
Background:	This gene encodes an estrogen receptor, a ligand-activated transcription factor composed of several domains important for hormone binding, DNA binding, and activation of transcription.

## Target Details

---

The protein localizes to the nucleus where it may form a homodimer or a heterodimer with estrogen receptor 2. Estrogen and its receptors are essential for sexual development and reproductive function, but also play a role in other tissues such as bone. Estrogen receptors are also involved in pathological processes including breast cancer, endometrial cancer, and osteoporosis. Alternative promoter usage and alternative splicing result in dozens of transcript variants, but the full-length nature of many of these variants has not been determined.

---

Molecular Weight: 14.4 kDa

---

NCBI Accession: [NP\\_000116](#)

---

Pathways: [Nuclear Receptor Transcription Pathway](#), [EGFR Signaling Pathway](#), [Retinoic Acid Receptor Signaling Pathway](#), [Intracellular Steroid Hormone Receptor Signaling Pathway](#), [Steroid Hormone Mediated Signaling Pathway](#), [Ribonucleoprotein Complex Subunit Organization](#), [Ribosome Assembly](#)

## Application Details

---

Application Notes: Recombinant human proteins can be used for:  
Native antigens for optimized antibody production  
Positive controls in ELISA and other antibody assays

---

Comment: The tag is located at the C-terminal.

---

Restrictions: For Research Use only

## Handling

---

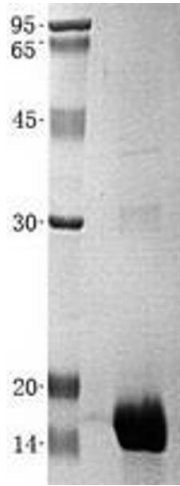
Buffer: Lyophilized from a 0.2  $\mu$ M filtered solution of 20 mM Phosphate buffer, 150 mM NaCl, pH 7.2.  
Stable for at least 6 months from date of receipt under proper storage and handling conditions.

---

Storage: -80 °C

---

Storage Comment: Store at -80°C. Thaw on ice, aliquot to individual single-use tubes, and then re-freeze immediately. Only 2-3 freeze thaw cycles are recommended.



### Western Blotting

**Image 1.** Validation with Western Blot