

Datasheet for ABIN2720575

ETS1 Protein (Transcript Variant 2) (Myc-DYKDDDDK Tag)[Go to Product page](#)**2** Images

Overview

Quantity:	20 µg
Target:	ETS1
Protein Characteristics:	Transcript Variant 2
Origin:	Human
Source:	HEK-293 Cells
Protein Type:	Recombinant
Biological Activity:	Active
Purification tag / Conjugate:	This ETS1 protein is labelled with Myc-DYKDDDDK Tag.
Application:	Antibody Production (AbP), Functional Studies (Func), Protein Interaction (PI), Standard (STD)

Product Details

Specificity:	Optimal preservation of protein structure, post-translational modifications and functions.
Characteristics:	<ul style="list-style-type: none">• Recombinant human ETS1 (transcript variant 2) protein expressed in HEK293 cells.• Produced with end-sequenced ORF clone• Tested for bioactivity.
Purity:	> 80 % as determined by SDS-PAGE and Coomassie blue staining
Biological Activity Comment:	ETS1 Activity Verified in a DNA-binding Assay;,ETS1 Activity Verified in a DNA-binding Assay;,ETS1 Activity Verified in a DNA-binding Assay;

Target Details

Target:	ETS1
---------	------

Target Details

Alternative Name: Ets1 ([ETS1 Products](#))

Background: This gene encodes a member of the ETS family of transcription factors, which are defined by the presence of a conserved ETS DNA-binding domain that recognizes the core consensus DNA sequence GGAA/T in target genes. These proteins function either as transcriptional activators or repressors of numerous genes, and are involved in stem cell development, cell senescence and death, and tumorigenesis. Alternatively spliced transcript variants encoding different isoforms have been described for this gene.[provided by RefSeq, Jul 2011].

Molecular Weight: 50.2 kDa

NCBI Accession: [NP_005229](#)

Application Details

Application Notes: Recombinant human proteins can be used for:

- Native antigens for optimized antibody production
- Positive controls in ELISA and other antibody assays
- Protein-protein interaction
- In vitro biochemical assays and cell-based functional assays

Comment: The tag is located at the C-terminal.

Restrictions: For Research Use only

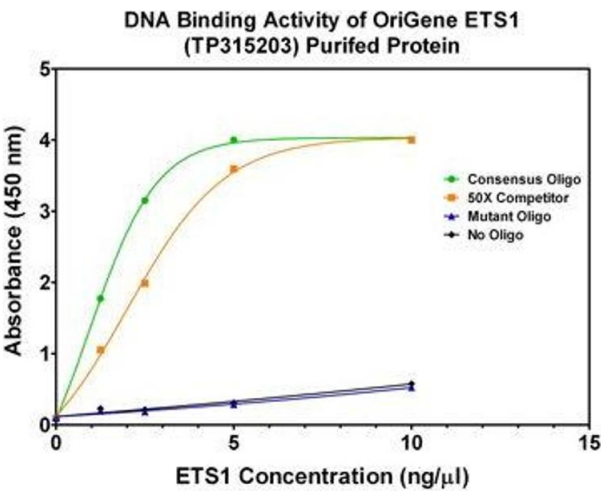
Handling

Concentration: > 50 µg/mL

Buffer: 25 mM Tris.HCl, pH 7.3, 100 mM glycine, 10 % glycerol.

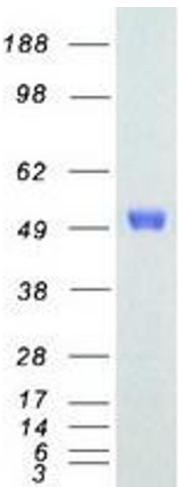
Storage: -80 °C

Storage Comment: Store at -80°C. Thaw on ice, aliquot to individual single-use tubes, and then re-freeze immediately. Only 2-3 freeze thaw cycles are recommended.



Activity Assay

Image 1. Bioactivity measured with Activity Assay



Western Blotting

Image 2. Validation with Western Blot