



[Go to Product page](#)

Datasheet for ABIN2720612

EXOC7 Protein (Transcript Variant 6) (Myc-DYKDDDDK Tag)

1 Image

Overview

Quantity:	20 µg
Target:	EXOC7
Protein Characteristics:	Transcript Variant 6
Origin:	Human
Source:	HEK-293 Cells
Protein Type:	Recombinant
Purification tag / Conjugate:	This EXOC7 protein is labelled with Myc-DYKDDDDK Tag.
Application:	Antibody Production (AbP), Standard (STD)

Product Details

Characteristics:	<ul style="list-style-type: none">• Recombinant human EXOC7 (transcript variant 6) protein expressed in HEK293 cells.• Produced with end-sequenced ORF clone
Purity:	> 80 % as determined by SDS-PAGE and Coomassie blue staining

Target Details

Target:	EXOC7
Alternative Name:	Exoc7 (EXOC7 Products)
Background:	The protein encoded by this gene is a component of the exocyst complex. The exocyst complex plays a critical role in vesicular trafficking and the secretory pathway by targeting post-Golgi vesicles to the plasma membrane. The encoded protein is required for assembly of the exocyst complex and docking of the complex to the plasma membrane. The encoded protein may also

Target Details

play a role in pre-mRNA splicing through interactions with pre-mRNA-processing factor 19. Alternatively spliced transcript variants encoding multiple isoforms have been observed for this gene, and a pseudogene of this gene is located on the long arm of chromosome 4.

Molecular Weight: 80.5 kDa

NCBI Accession: [NP_001138771](#)

Pathways: [Peptide Hormone Metabolism](#), [ER-Nucleus Signaling](#), [Synaptic Vesicle Exocytosis](#)

Application Details

Application Notes: Recombinant human proteins can be used for:
Native antigens for optimized antibody production
Positive controls in ELISA and other antibody assays

Comment: The tag is located at the C-terminal.

Restrictions: For Research Use only

Handling

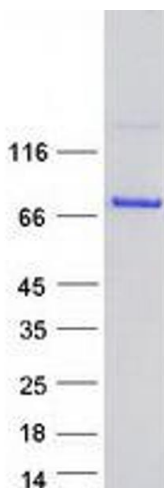
Concentration: 50 µg/mL

Buffer: 25 mM Tris.HCl, pH 7.3, 100 mM glycine, 10 % glycerol.

Storage: -80 °C

Storage Comment: Store at -80°C. Thaw on ice, aliquot to individual single-use tubes, and then re-freeze immediately. Only 2-3 freeze thaw cycles are recommended.

Images



Western Blotting

Image 1. Validation with Western Blot