



[Go to Product page](#)

Datasheet for ABIN2720615

## EXOC8 Protein (Myc-DYKDDDDK Tag)

### 1 Image

#### Overview

Quantity:	20 µg
Target:	EXOC8 (EX084)
Origin:	Human
Source:	HEK-293 Cells
Protein Type:	Recombinant
Purification tag / Conjugate:	This EXOC8 protein is labelled with Myc-DYKDDDDK Tag.
Application:	Antibody Production (AbP), Standard (STD)

#### Product Details

Characteristics:	<ul style="list-style-type: none"><li>• Recombinant human EXOC8 protein expressed in HEK293 cells.</li><li>• Produced with end-sequenced ORF clone</li></ul>
------------------	--

Purity:	> 80 % as determined by SDS-PAGE and Coomassie blue staining
---------	--

#### Target Details

Target:	EXOC8 (EX084)
---------	---------------

Alternative Name:	Exocyst Complex Component 8 (Exoc8) ( <a href="#">EX084 Products</a> )
-------------------	--

Background:	This gene encodes a component of the exocyst complex, an evolutionarily conserved multi-protein complex that plays a critical role in vesicular trafficking and the secretory pathway by targeting post-Golgi vesicles to the plasma membrane. This protein is a target of activated Ral subfamily of GTPases and thereby regulates exocytosis by tethering vesicles to the plasma membrane. Mutations in this gene may be related to Joubert syndrome.
-------------	---

## Target Details

Molecular Weight: 81.6 kDa

NCBI Accession: [NP\\_787072](#)

Pathways: [Peptide Hormone Metabolism](#)

## Application Details

Application Notes: Recombinant human proteins can be used for:  
Native antigens for optimized antibody production  
Positive controls in ELISA and other antibody assays

Comment: The tag is located at the C-terminal.

Restrictions: For Research Use only

## Handling

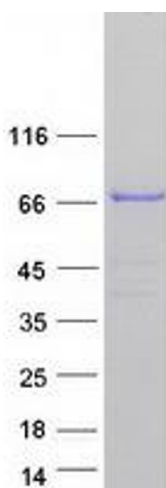
Concentration: 50 µg/mL

Buffer: 25 mM Tris.HCl, pH 7.3, 100 mM glycine, 10 % glycerol.

Storage: -80 °C

Storage Comment: Store at -80°C. Thaw on ice, aliquot to individual single-use tubes, and then re-freeze immediately. Only 2-3 freeze thaw cycles are recommended.

## Images



### Western Blotting

**Image 1.** Validation with Western Blot