

Datasheet for ABIN272069

anti-PKD2 antibody[Go to Product page](#)**1** Image

Overview

Quantity:	0.1 mg
Target:	PKD2
Reactivity:	Human, Mouse, Rat
Host:	Rabbit
Clonality:	Polyclonal
Conjugate:	This PKD2 antibody is un-conjugated
Application:	Western Blotting (WB), Immunohistochemistry (Paraffin-embedded Sections) (IHC (p)), Enzyme Immunoassay (EIA)

Product Details

Specificity:	This antibody detects endogenous levels of PKD2 protein. (region surrounding Ala872)
Cross-Reactivity (Details):	Species reactivity (expected):Mouse and Rat. Species reactivity (tested):Human.
Purification:	Affinity Chromatography using epitope-specific immunogen

Target Details

Target:	PKD2
Alternative Name:	PRKD2 / PKD2 (PKD2 Products)
Background:	The protein encoded by this gene belongs to the protein kinase D (PKD) family of serine/threonine protein kinases. This kinase can be activated by phorbol esters as well as by gastrin via the cholecystokinin B receptor (CCKBR) in gastric cancer cells. It can bind to

Target Details

	diacylglycerol (DAG) in the trans-Golgi network (TGN) and may regulate basolateral membrane protein exit from TGN. Alternative splicing results in multiple transcript variants encoding different isoforms.Synonyms: HSPC187, PKC-D2, Serine/threonine-protein kinase D2, nPKC-D2
Molecular Weight:	approx. 96 kDa
Gene ID:	25865
NCBI Accession:	NP_001073349
UniProt:	Q9BZL6
Pathways:	cAMP Metabolic Process , Maintenance of Protein Location , Negative Regulation of Transporter Activity

Application Details

Application Notes:	ELISA: 1/5000approx. 1/10000. Western Blot: 1/500approx. 1/1000. Immunohistochemistry: 1/50approx. 1/200. Other applications not tested. Optimal dilutions are dependent on conditions and should be determined by the user.
Restrictions:	For Research Use only

Handling

Concentration:	1.0 mg/mL
Buffer:	Phosphate buffered saline (PBS), pH ~7.2, 0.05 % Sodium Azide
Preservative:	Sodium azide
Precaution of Use:	This product contains sodium azide: a POISONOUS AND HAZARDOUS SUBSTANCE which should be handled by trained staff only.
Handling Advice:	Avoid repeated freezing and thawing.
Storage:	4 °C/-20 °C
Storage Comment:	Store undiluted at 2-8 °C for one month or (in aliquots) at -20 °C for longer.

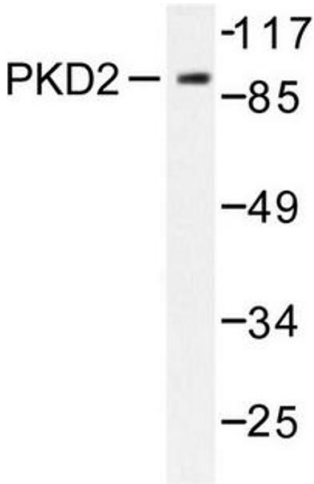


Image 1.