



[Go to Product page](#)

Datasheet for ABIN2720858  
**SUPT20HL2 Protein (Myc-DYKDDDDK Tag)**

1 Image

### Overview

Quantity:	20 µg
Target:	SUPT20HL2
Origin:	Human
Source:	HEK-293 Cells
Protein Type:	Recombinant
Purification tag / Conjugate:	This SUPT20HL2 protein is labelled with Myc-DYKDDDDK Tag.
Application:	Antibody Production (AbP), Standard (STD)

### Product Details

Characteristics:	<ul style="list-style-type: none"><li>• Recombinant human Family with sequence similarity 48, member B2 (FAM48B2) protein expressed in HEK293 cells.</li><li>• Produced with end-sequenced ORF clone</li></ul>
Purity:	> 80 % as determined by SDS-PAGE and Coomassie blue staining

### Target Details

Target:	SUPT20HL2
Alternative Name:	Family with Sequence Similarity 48, Member b2 (Fam48b2) ( <a href="#">SUPT20HL2 Products</a> )
Molecular Weight:	87.4 kDa
NCBI Accession:	<a href="#">NP_001129705</a>

## Application Details

Application Notes: Recombinant human proteins can be used for:  
Native antigens for optimized antibody production  
Positive controls in ELISA and other antibody assays

Comment: The tag is located at the C-terminal.

Restrictions: For Research Use only

## Handling

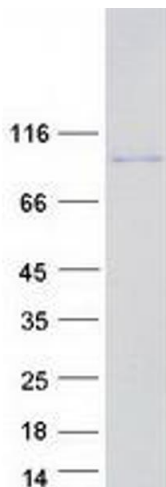
Concentration: 50 µg/mL

Buffer: 25 mM Tris.HCl, pH 7.3, 100 mM glycine, 10 % glycerol.

Storage: -80 °C

Storage Comment: Store at -80°C. Thaw on ice, aliquot to individual single-use tubes, and then re-freeze immediately. Only 2-3 freeze thaw cycles are recommended.

## Images



### Western Blotting

**Image 1.** Validation with Western Blot