

## Datasheet for ABIN2720997 FCRLB Protein (His tag)



[Go to Product page](#)

### 1 Image

#### Overview

Quantity:	50 µg
Target:	FCRLB
Origin:	Human
Source:	Escherichia coli (E. coli)
Protein Type:	Recombinant
Purification tag / Conjugate:	This FCRLB protein is labelled with His tag.
Application:	Antibody Production (AbP), Standard (STD)

#### Product Details

Characteristics:	<ul style="list-style-type: none"><li>• Recombinant human FCRLB (full length, N-term HIS tag) protein expressed in E.coli.</li><li>• Produced with end-sequenced ORF clone</li></ul>
Purity:	> 80 % as determined by SDS-PAGE and Coomassie blue staining

#### Target Details

Target:	FCRLB
Alternative Name:	Fcrlb ( <a href="#">FCRLB Products</a> )
Background:	FCRL2 belongs to the Fc receptor family. Fc receptors are involved in phagocytosis, antibody-dependent cell cytotoxicity, immediate hypersensitivity, and transcytosis of immunoglobulins via their ability to bind immunoglobulin (Ig) constant regions (Chikae et al., 2005 [PubMed 15676285]).[supplied by OMIM, Mar 2008]
Molecular Weight:	46.7 kDa

## Target Details

---

NCBI Accession: [NP\\_001002901](#)

## Application Details

---

Application Notes: Recombinant human proteins can be used for:  
Native antigens for optimized antibody production  
Positive controls in ELISA and other antibody assays

Comment: The tag is located at the N-terminal.

Restrictions: For Research Use only

## Handling

---

Concentration: 50 µg/mL

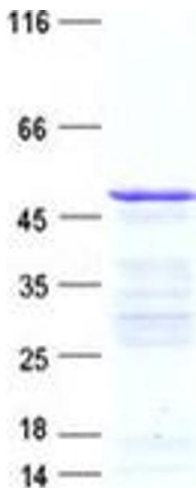
Buffer: 50 mM Tris, 8M Urea, pH 8.0

Storage: -80 °C

Storage Comment: Store at -80°C. Thaw on ice, aliquot to individual single-use tubes, and then re-freeze immediately. Only 2-3 freeze thaw cycles are recommended.

## Images

---



### Western Blotting

**Image 1.** Validation with Western Blot