

Datasheet for ABIN272103 anti-TUBA1B antibody



[Go to Product page](#)

2 Images

Overview

Quantity:	0.1 mg
Target:	TUBA1B
Reactivity:	Human, Mouse, Rat
Host:	Rabbit
Clonality:	Polyclonal
Conjugate:	This TUBA1B antibody is un-conjugated
Application:	Western Blotting (WB), Immunofluorescence (IF), Immunohistochemistry (Paraffin-embedded Sections) (IHC (p))

Product Details

Specificity:	This antibody detects endogenous levels of Tubulin alpha protein. (region surrounding Gly436)
Cross-Reactivity (Details):	Species reactivity (expected):Mouse and Rat. Species reactivity (tested):Human.
Purification:	Affinity Chromatography using epitope-specific immunogen.

Target Details

Target:	TUBA1B
Alternative Name:	alpha Tubulin / TUBA1B (TUBA1B Products)
Background:	Tubulin is a major cytoskeleton component that has three distinct forms, designated α , β and γ Tubulin. α and β Tubulins form heterodimers, which multimerize to form a microtubule filament. γ Tubulin forms a soluble multiprotein particle with several other proteins. This

Target Details

particle, designated the gammasome, is required for nucleating microtubule filaments at the centrosome. In several organisms, numerous isoforms of the Tubulins exist that are encoded by different genes. The α and β isoforms undergo a variety of post-translational modifications, which may affect microtubule stability and protein interactions. High expression of class II β Tubulin has been seen in elongating axons, indicating a role in neurite outgrowth. Tubulins may also play a role in non-neuronal cell process formation. Synonyms: Alpha-tubulin ubiquitous, Tubulin K-alpha-1, Tubulin alpha-1B chain, Tubulin alpha-ubiquitous chain

Molecular Weight: approx. 50 kDa

Gene ID: 10376

NCBI Accession: [NP_006073](#)

UniProt: [P68363](#)

Pathways: [Microtubule Dynamics, M Phase](#)

Application Details

Application Notes: ELISA: 1/10000-1/20000. Western Blot: 1/500-1/1000. Immunohistochemistry : 1/50-1/200.
Immunofluorescence: 1/50-1/200.
Other applications not tested.
Optimal dilutions are dependent on conditions and should be determined by the user.

Restrictions: For Research Use only

Handling

Concentration: 1.0 mg/mL

Buffer: Phosphate buffered saline (PBS), pH ~7.2, 0.05 % Sodium Azide

Preservative: Sodium azide

Precaution of Use: This product contains sodium azide: a POISONOUS AND HAZARDOUS SUBSTANCE which should be handled by trained staff only.

Handling Advice: Avoid repeated freezing and thawing.

Storage: 4 °C/-20 °C

Storage Comment: Store the antibody undiluted at 2-8 °C for one month or (in aliquots) at -20 °C for longer.

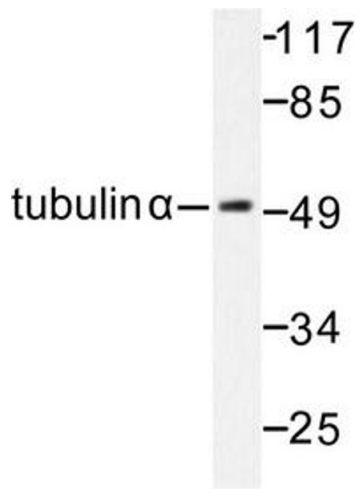


Image 1.

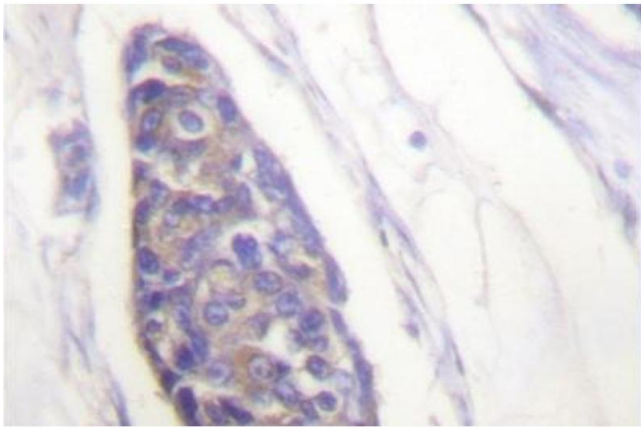


Image 2.