

Datasheet for ABIN2721176

FLRT2 Protein (Myc-DYKDDDDK Tag)[Go to Product page](#)**1** Image

Overview

Quantity:	20 µg
Target:	FLRT2
Origin:	Human
Source:	HEK-293 Cells
Protein Type:	Recombinant
Purification tag / Conjugate:	This FLRT2 protein is labelled with Myc-DYKDDDDK Tag.
Application:	Antibody Production (AbP), Standard (STD)

Product Details

Characteristics:	<ul style="list-style-type: none">• Recombinant human Fibronectin leucine rich transmembrane protein 2 (FLRT2) protein expressed in HEK293 cells.• Produced with end-sequenced ORF clone
Purity:	> 80 % as determined by SDS-PAGE and Coomassie blue staining

Target Details

Target:	FLRT2
Abstract:	FLRT2 Products
Background:	This gene encodes a member of the fibronectin leucine rich transmembrane (FLRT) family of cell adhesion molecules, which regulate early embryonic vascular and neural development. The encoded type I transmembrane protein has an extracellular region consisting of an N-terminal leucine-rich repeat domain and a type 3 fibronectin domain, followed by a transmembrane

Target Details

domain and a short C-terminal cytoplasmic tail domain. It functions as both a homophilic cell adhesion molecule and a heterophilic chemorepellent through its interaction with members of the uncoordinated-5 receptor family. Proteolytic removal of the extracellular region controls the migration of neurons in the developing cortex. Alternative splicing results in multiple transcript variants.

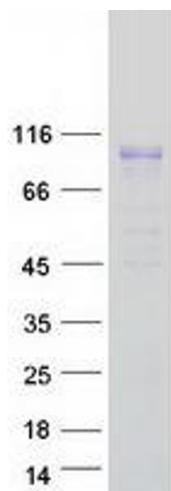
Molecular Weight:	73.9 kDa
NCBI Accession:	NP_037363

Application Details

Application Notes:	Recombinant human proteins can be used for: Native antigens for optimized antibody production Positive controls in ELISA and other antibody assays
Comment:	The tag is located at the C-terminal.
Restrictions:	For Research Use only

Handling

Concentration:	50 µg/mL
Buffer:	25 mM Tris.HCl, pH 7.3, 100 mM glycine, 10 % glycerol.
Storage:	-80 °C
Storage Comment:	Store at -80°C. Thaw on ice, aliquot to individual single-use tubes, and then re-freeze immediately. Only 2-3 freeze thaw cycles are recommended.



Western Blotting

Image 1. Validation with Western Blot