

Datasheet for ABIN2721238

FLT3LG Protein (Myc-DYKDDDDK Tag)**2** Images[Go to Product page](#)

Overview

Quantity:	20 µg
Target:	FLT3LG
Origin:	Human
Source:	HEK-293 Cells
Protein Type:	Recombinant
Biological Activity:	Active
Purification tag / Conjugate:	This FLT3LG protein is labelled with Myc-DYKDDDDK Tag.
Application:	Functional Studies (Func), Antibody Production (AbP), Standard (STD), Protein Interaction (PI)

Product Details

Specificity:	Optimal preservation of protein structure, post-translational modifications and functions.
Characteristics:	<ul style="list-style-type: none">• Recombinant human Flt3 ligand protein expressed in HEK293 cells.• Produced with end-sequenced ORF clone• Tested for bioactivity.
Purity:	> 80 % as determined by SDS-PAGE and Coomassie blue staining
Biological Activity Comment:	FLT-3LG generate dendritic cell differentiation: Fms-like tyrosine kinase 3 ligand (Flt3L) is a nonredundant cytokine required for dendritic cell (DC) homeostasis in lymphoid tissues. FLT3L is commonly used to generate pDCs in vitro. In this experiment, 300,000 unfractionated mouse bone marrow cells were cultured with purified recombinant human FLT-3L (OriGene,) at indicated concentrations. Total live cells were counted at the day 8.

Target Details

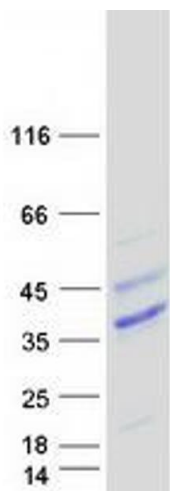
Target:	FLT3LG
Alternative Name:	Flt3 Ligand (FLT3LG Products)
Background:	Dendritic cells (DCs) provide the key link between innate and adaptive immunity by recognizing pathogens and priming pathogen-specific immune responses. FLT3LG controls the development of DCs and is particularly important for plasmacytoid DCs and CD8 (see MIM 186910)-positive classical DCs and their CD103 (ITGAE MIM 604682)-positive tissue counterparts (summary by Sathaliyawala et al., 2010 [PubMed 20933441]).[supplied by OMIM, Jan 2011].
Molecular Weight:	26.2 kDa
NCBI Accession:	NP_001450
Pathways:	RTK Signaling

Application Details

Application Notes:	Recombinant human proteins can be used for: Native antigens for optimized antibody production Positive controls in ELISA and other antibody assays Protein-protein interaction In vitro biochemical assays and cell-based functional assays
Comment:	The tag is located at the C-terminal.
Restrictions:	For Research Use only

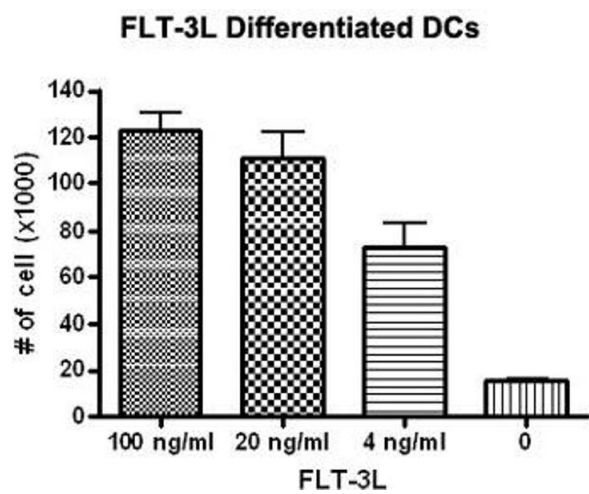
Handling

Concentration:	> 50 µg/mL
Buffer:	25 mM Tris.HCl, pH 7.3, 100 mM glycine, 10 % glycerol.
Storage:	-80 °C
Storage Comment:	Store at -80°C. Thaw on ice, aliquot to individual single-use tubes, and then re-freeze immediately. Only 2-3 freeze thaw cycles are recommended.



Western Blotting

Image 1. Validation with Western Blot



Activity Assay

Image 2. Bioactivity measured with Activity Assay