

Datasheet for ABIN2721482

FYN Protein (Transcript Variant 1) (Myc-DYKDDDDK Tag)[Go to Product page](#)**2** Images

Overview

Quantity:	20 µg
Target:	FYN
Protein Characteristics:	Transcript Variant 1
Origin:	Human
Source:	HEK-293 Cells
Protein Type:	Recombinant
Biological Activity:	Active
Purification tag / Conjugate:	This FYN protein is labelled with Myc-DYKDDDDK Tag.
Application:	Antibody Production (AbP), Standard (STD), Functional Studies (Func), Protein Interaction (PI)

Product Details

Specificity:	Optimal preservation of protein structure, post-translational modifications and functions.
Characteristics:	<ul style="list-style-type: none">• Recombinant human FYN (transcript variant 1) protein expressed in HEK293 cells.• Produced with end-sequenced ORF clone• Tested for bioactivity.
Purity:	> 80 % as determined by SDS-PAGE and Coomassie blue staining
Biological Activity Comment:	FYN activity verified in a biochemical assay; FYN activity verified in a biochemical assay; FYN activity verified in a biochemical assay;

Target Details

Target:	FYN
---------	-----

Target Details

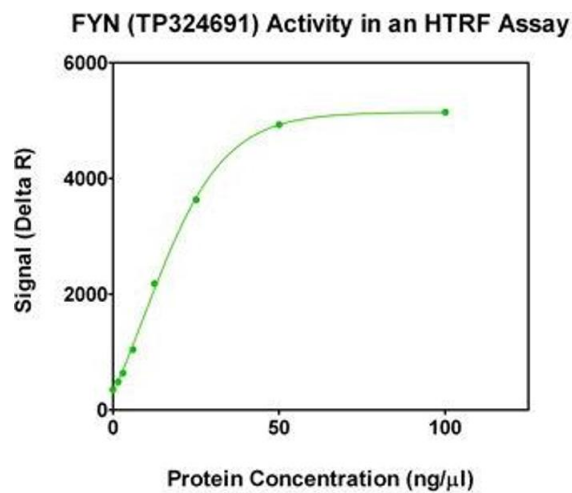
Alternative Name:	Fyn (FYN Products)
Background:	This gene is a member of the protein-tyrosine kinase oncogene family. It encodes a membrane-associated tyrosine kinase that has been implicated in the control of cell growth. The protein associates with the p85 subunit of phosphatidylinositol 3-kinase and interacts with the fyn-binding protein. Alternatively spliced transcript variants encoding distinct isoforms exist.
Molecular Weight:	60.6 kDa
NCBI Accession:	NP_002028
Pathways:	JAK-STAT Signaling , TCR Signaling , Fc-epsilon Receptor Signaling Pathway , EGFR Signaling Pathway , Neurotrophin Signaling Pathway , Feeding Behaviour , CXCR4-mediated Signaling Events , Signaling Events mediated by VEGFR1 and VEGFR2 , Activated T Cell Proliferation , Thromboxane A2 Receptor Signaling

Application Details

Application Notes:	Recombinant human proteins can be used for: Native antigens for optimized antibody production Positive controls in ELISA and other antibody assays Protein-protein interaction In vitro biochemical assays and cell-based functional assays
Comment:	The tag is located at the C-terminal.
Restrictions:	For Research Use only

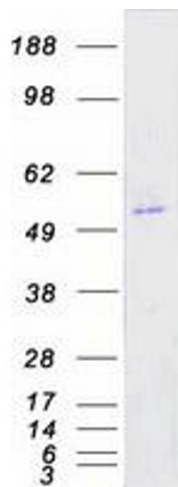
Handling

Concentration:	> 50 µg/mL
Buffer:	25 mM Tris.HCl, pH 7.3, 100 mM glycine, 10 % glycerol.
Storage:	-80 °C
Storage Comment:	Store at -80°C. Thaw on ice, aliquot to individual single-use tubes, and then re-freeze immediately. Only 2-3 freeze thaw cycles are recommended.



Activity Assay

Image 1. Bioactivity measured with Activity Assay



Western Blotting

Image 2. Validation with Western Blot